



21/78 Hampden Road

LIGHT FILLED TWO-BEDROOM APARTMENT WITH DISTRICT VIEWS

With a prized top floor position and renovated interiors, this spacious and modern two bedroom apartment is a great a move-in-ready option for first-home buyers or investors. Enjoying a sunny aspect and cooling bay breezes, the bright open plan layout flows through to a full-width balcony that delivers leafy district views across the rooftops of Russell Lea. Featuring two generously sized bedrooms, a sleek full-sized kitchen, and large combined living and dining area, there's plenty of space to ... for more information please visit our website

Water Rate | \$591

Council Rate | \$1,180

Disclaimer: In preparing this brochure, Warwick Williams and it's related franchisees has relied in good faith upon information provided by others and has made all reasonable efforts to ensure that the information is correct. The accuracy of the information provided to you (whether written or verbal) cannot be guaranteed. If you are considering this property, you must make all enquiries necessary to satisfy yourself that all information is accurate.

| | | |
|-----|------|-----|
| CAR | BATH | BED |
| 1 | 1 | 2 |

SOLD

Sold

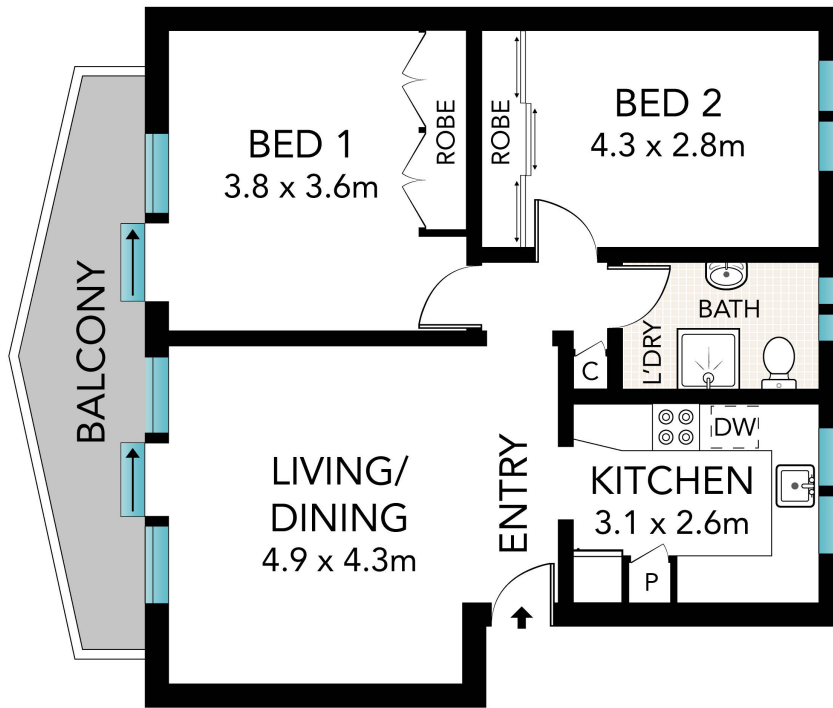


Morgan Davies-Forsyth 02 9719 8288

morgand@wwre.com.au

Warwick Williams 02 9719 8288

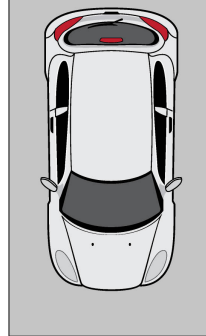
ww@wwre.com.au



STORAGE
1.2 x 1.2m



CAR SPACE
2.6 x 5.7m



21/78 Hampden Road, Russell Lea

All information in this document has been gathered from various third party sources we believe to be reliable; however, we cannot guarantee its accuracy, and we accept no responsibility and disclaim all liability in respect to any errors, omissions, inaccuracies or misstatements in this document. Prospective purchasers are advised to carry out their own investigations and rely on their own enquiries.