



2/52-58 Courallie Avenue

## DUAL LEVEL APARTMENT TOTALLING 125 M<sup>2</sup> MOMENTS TO STATION

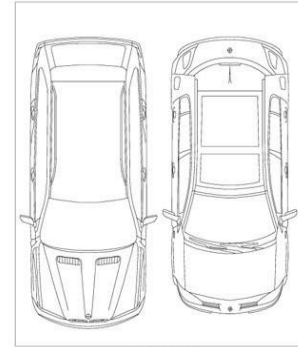
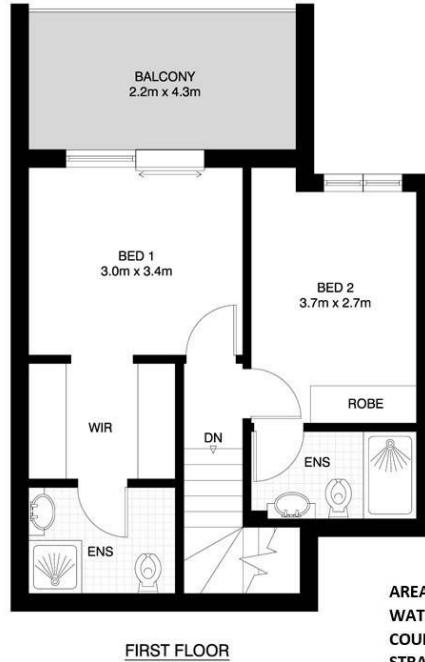
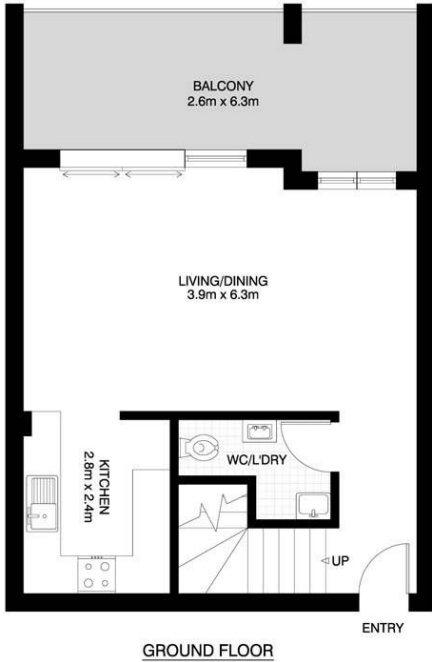
Boasting perfect design symmetry, this sensational apartment delivers a double serve of fabulous city living. Step out onto your immense north-facing balconies offering leafy garden outlooks for year-round al fresco entertaining. Wide-frame breezy windows, polished timber floorboards and cloud-white walls all combine to fill the vast open plan lounge/dining area with refreshing outside ambiance. Upstairs, be greeted by a grand master bedroom with sliding-door balcony access, walk-in robes and en... for more information please visit our website

Disclaimer: In preparing this brochure, Warwick Williams and its related franchisees has relied in good faith upon information provided by others and has made all reasonable efforts to ensure that the information is correct. The accuracy of the information provided to you (whether written or verbal) cannot be guaranteed. If you are considering this property, you must make all enquiries necessary to satisfy yourself that all information is accurate.

CAR	BATH	BED
2	2	2

**SOLD**

Sold



**SECURE CAR SPACE**  
5.5m x 4.5m  
(NOT ACTUAL LOCATION)

**AREA:** 101m<sup>2</sup> Living + 24m<sup>2</sup> Parking (approximately)  
**WATER RATES:** \$680.00 per Annum (approximately)  
**COUNCIL RATES:** \$1,260.00 per Annum (approximately)  
**STRATA LEVIES:** \$958 per Quarter (approximately)



All information presented is gathered from sources we believe are reliable. We have no reason to doubt it's accuracy, however, cannot guarantee it. The plans shown here are for presentation purposes & are not part of any legal document or title and are subject to errors, omissions & inaccuracies and should not be used as sole reference. All measurements & figures are approximate. Interested parties should make & rely on their own enquiries.

2/52-58 Courallie Avenue, Homebush West