



12/157-159 Hampden Road

TWO-BEDROOM TOWNHOUSE WITH PEACEFUL OUTDOOR SPACES

Enjoying a prime end position in a row of only 12 properties, this well-presented home is ideal for those looking to trade apartment living for a sizeable townhouse with two outdoor spaces. Offering a low-maintenance layout and plenty of natural light, the ground level features a large living and dining space that flows to a paved courtyard at the front and a pretty, landscaped garden at the rear. The spacious upper level includes a large laundry, modern bathroom with bath and separate shower, p... for more information please visit our website

Water Rate | \$693

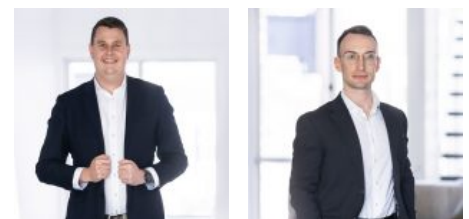
Council Rate | \$1,328

Disclaimer: In preparing this brochure, Warwick Williams and its related franchisees has relied in good faith upon information provided by others and has made all reasonable efforts to ensure that the information is correct. The accuracy of the information provided to you (whether written or verbal) cannot be guaranteed. If you are considering this property, you must make all enquiries necessary to satisfy yourself that all information is accurate.

CAR	BATH	BED
3	1	2

SOLD

Sold

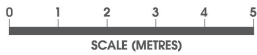
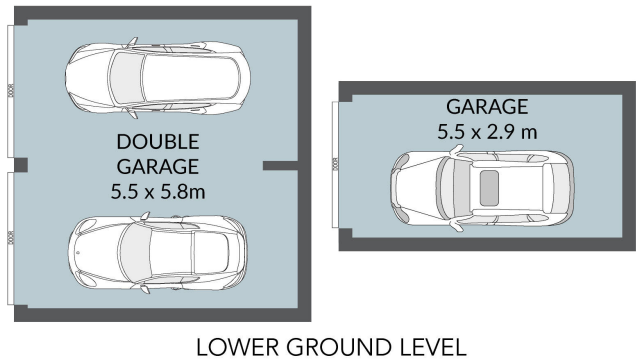
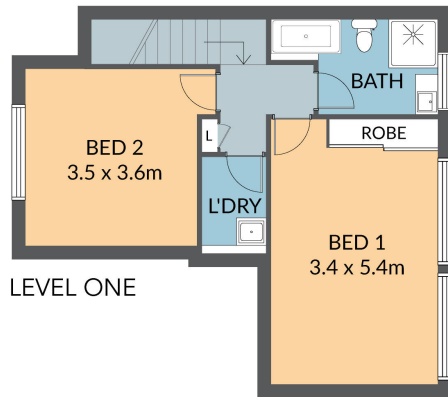
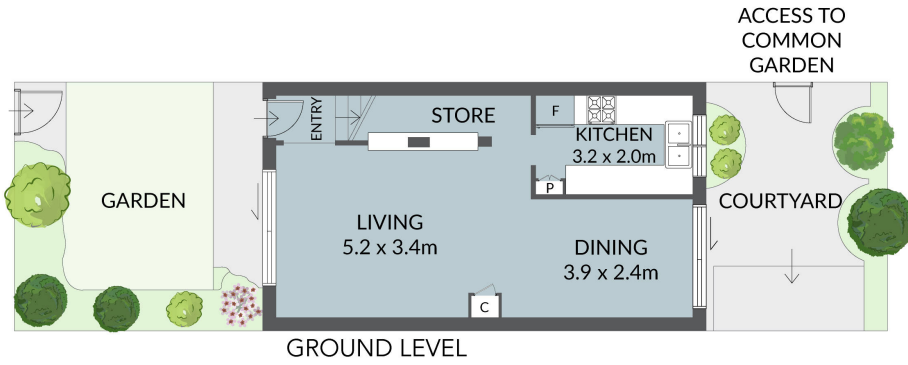


Samuel Williams 02 9719 8288

samw@wwre.com.au

Morgan Davies-Forsyth 02 9719 8288

morgand@wwre.com.au



12/157 Hampden Road, Abbotsford

All information in this document has been gathered from various third party sources we believe to be reliable; however, we cannot guarantee its accuracy, and we accept no responsibility and disclaim all liability in respect to any errors, omissions, inaccuracies or misstatements in this document. Prospective purchasers are advised to carry out their own investigations and rely on their own enquiries.