



2/7 Day Street

DESIGNER TOWNHOME IN AN EXCLUSIVE BAYSIDE SETTING

A quiet setting in a boutique collection of five affords this designer townhouse an uplifting sense of peace and privacy in an exclusive East Side enclave, footsteps to the waters edge. Featuring a private entry and double garaging, the terrace-style townhouse is set over three custom-appointed levels with a choice of outdoor living spaces, high-end finishes and a versatile top floor retreat. Enjoy the ultimate in luxurious low-maintenance living, a stroll to Birkenhead Point Shopping Centre, bo... for more information please visit our website
 Disclaimer: In preparing this brochure, Warwick Williams and it's related franchisees has relied in good faith upon information provided by others and has made all reasonable efforts to ensure that the information is correct. The accuracy of the information provided to you (whether written or verbal) cannot be guaranteed. If you are considering this property, you must make all enquiries necessary to satisfy yourself that all information is accurate.

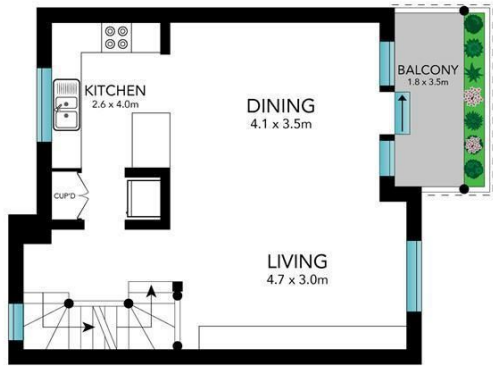
CAR	BATH	BED
2	1	3

SOLD

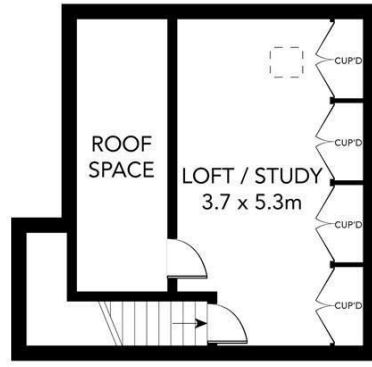
Sold



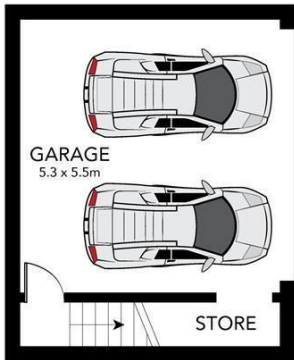
Jacki Williams 02 9719 8288
 jackiw@wwre.com.au



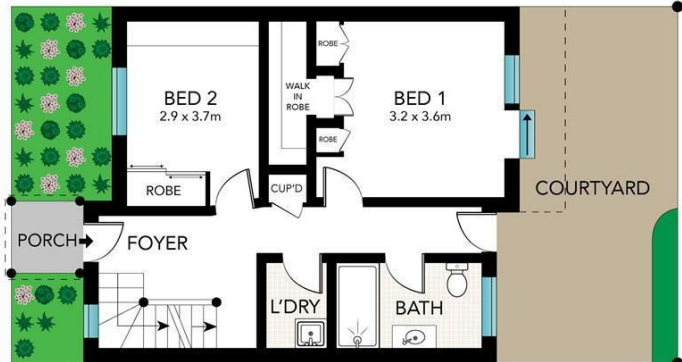
FIRST FLOOR



SECOND FLOOR



LOWER GROUND FLOOR



GROUND FLOOR



Scale in metres. Indicative only. Dimensions are approximate. All information contained herein is gathered from sources we believe to be reliable. However, we cannot guarantee its accuracy and interested persons should rely on their own enquiries.



2/7 Day Street, Drummoyne