

2/5 Day Street

SPECTACULAR HARBOUR VIEWS

Secluded from the street in an exclusive boutique collection, this immaculately presented executive townhouse combines the feel of a house with the convenience of low maintenance living. Featuring a flexible layout with a view-swept upper level retreat and internal access to a double-lock-up garage, it enjoys a prestigious East Side address just footsteps to the waterfront and Birkenhead Shopping Centre. *Panoramic views across the city skyline, Harbour Bridge from the top level *3 double beds, ... for more information please visit our website

| | | |
|-----|------|-----|
| CAR | BATH | BED |
| 2 | 2 | 3 |

SOLD

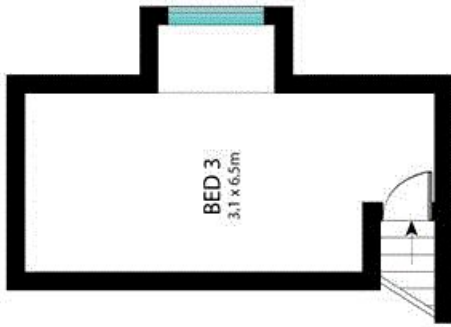
Sold



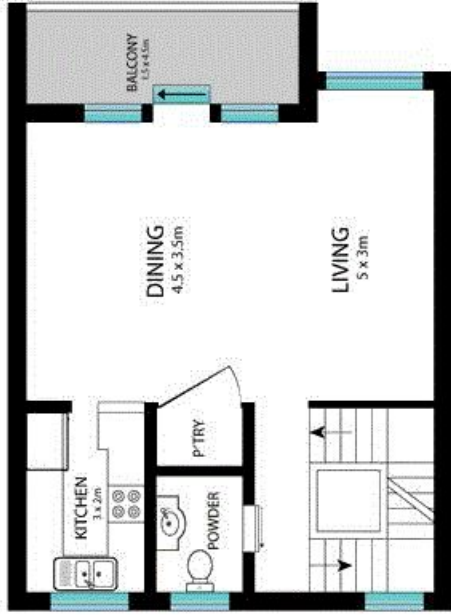
Disclaimer: In preparing this brochure, Warwick Williams and it's related franchisees has relied in good faith upon information provided by others and has made all reasonable efforts to ensure that the information is correct. The accuracy of the information provided to you (whether written or verbal) cannot be guaranteed. If you are considering this property, you must make all enquiries necessary to satisfy yourself that all information is accurate.

Warwick Williams 02 9719 8288

ww@wwre.com.au



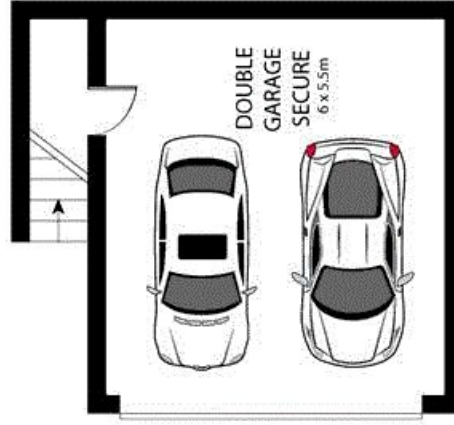
TOP LEVEL



LEVEL ONE



GROUND LEVEL



BASEMENT



Scale in metres. Indicative only. Dimensions are approximate. All information contained herein is gathered from sources we believe to be reliable. However, we cannot guarantee its accuracy and interested persons should rely on their own enquiries.



2/5 Day Street, Drummoyne