



2/287 Victoria Place

## PRIVATE OVERSIZED TOWNHOME WITH SWEEPING BAY VIEWS

With design cues taken from traditional Victorian architecture, this unexpectedly large townhome is one of 10 private residences in the tightly held 'Lady Victoria Gardens'. Capturing tranquil views over the yacht-filled waters of Five Dock Bay, it combines the appeal of terrace living while the easy and convenience of a townhouse. Featuring direct internal access to a huge garage and sunny outdoor pool with spa, its located on a prized street surrounded by water and parkland. Features: \* 3 doubl... for more information please visit our website

Disclaimer: In preparing this brochure, Warwick Williams and it's related franchisees has relied in good faith upon information provided by others and has made all reasonable efforts to ensure that the information is correct. The accuracy of the information provided to you (whether written or verbal) cannot be guaranteed. If you are considering this property, you must make all enquiries necessary to satisfy yourself that all information is accurate.

CAR  
1

BATH  
2

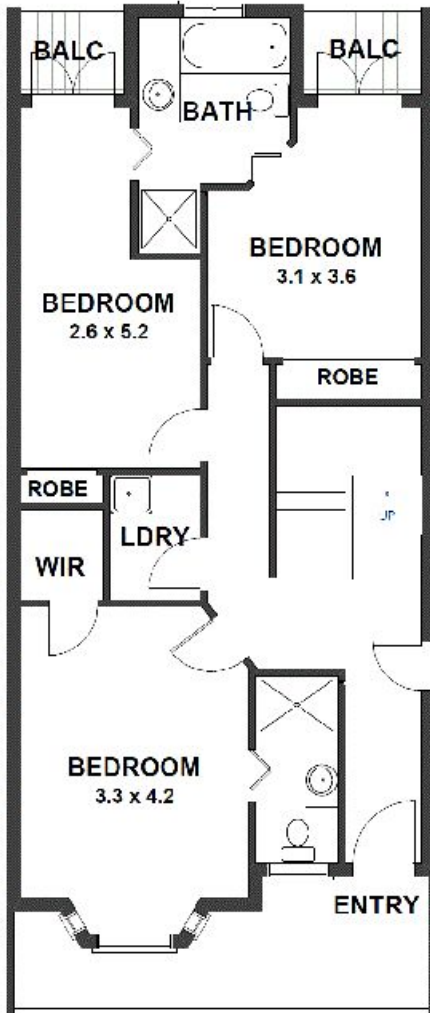
BED  
3

**SOLD**

Sold \$858,000

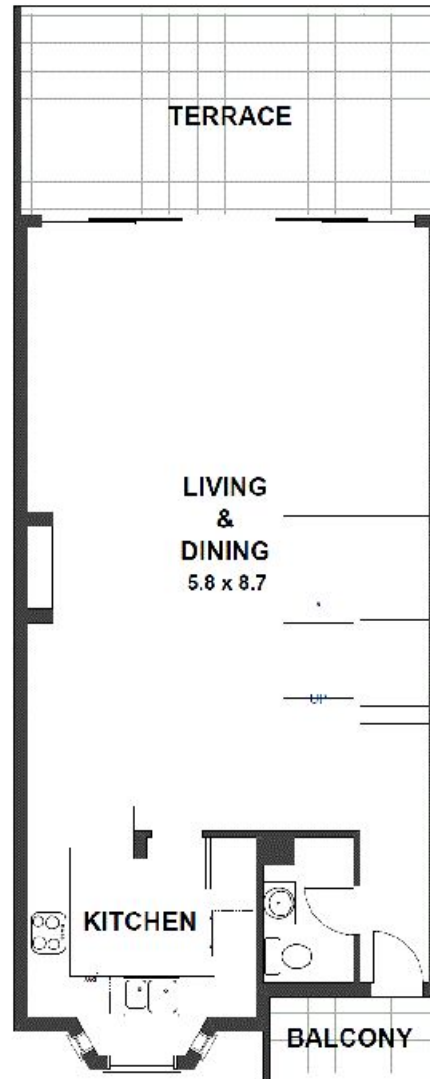


Warwick Williams Real Estate  
drummlease@wwre.com.au

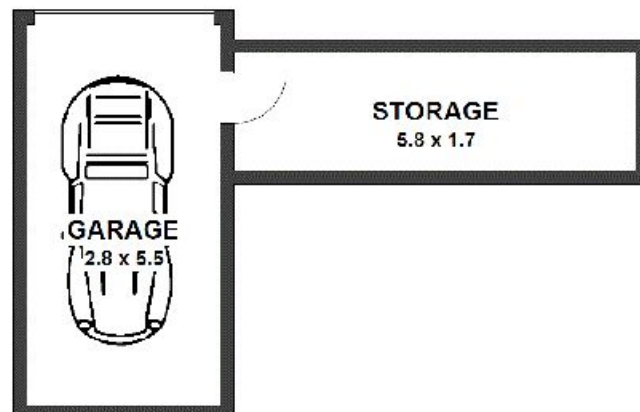


GROUND FLOOR

INTERNAL  
ACCESS  
TO  
PARKING



FIRST FLOOR



## Townhouse 2, 287 Victoria Place, Drummoyne

**DISCLAIMER CLAUSE** The information contained in this brochure has been furnished to us by the vendors. The plan is provided as a guide only. While we trust it to be correct, we cannot guarantee its accuracy. Sizes and areas indicated are approximate only. We have not verified whether or not that information is accurate and do not have any belief one way or another in its accuracy. We do not accept any responsibility to any person for its accuracy and do no more than pass it on. All interested parties should make and rely on their own enquiries in order to determine whether or not this information is in fact accurate.