



3/416 Great North Road

A SUN-FILLED BOUTIQUE TOWNHOME ON THE PENINSULA

Living is easy in this boutique townhome in a quiet peninsula setting opposite Abbotsford village cafes and 500m to the ferry wharf and renowned boating clubs. Offering more space than a traditional terrace with all the benefits of a modern build, the two-storey home features the added bonus of internal access to an enormous double lock-up garage with loads of storage space. Secluded from the road to the quiet rear of a gated collection of nine, the two-bedroom home opens to a landscaped enterta... for more information please visit our website

Water Rate | \$900

Council Rate | \$1,124

Disclaimer: In preparing this brochure, Warwick Williams and its related franchisees has relied in good faith upon information provided by others and has made all reasonable efforts to ensure that the information is correct. The accuracy of the information provided to you (whether written or verbal) cannot be guaranteed. If you are considering this property, you must make all enquiries necessary to satisfy yourself that all information is accurate.

CAR	BATH	BED
2	2	2

SOLD

Sold

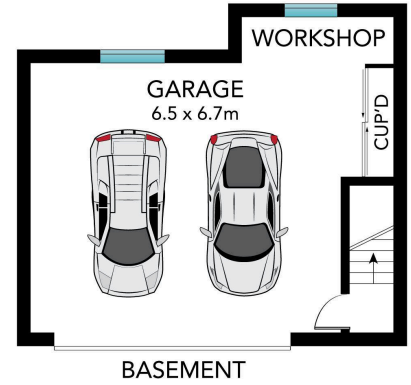
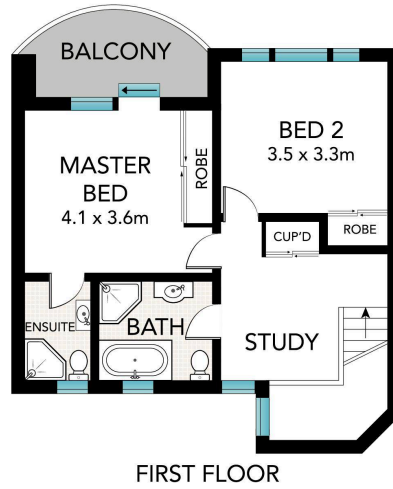
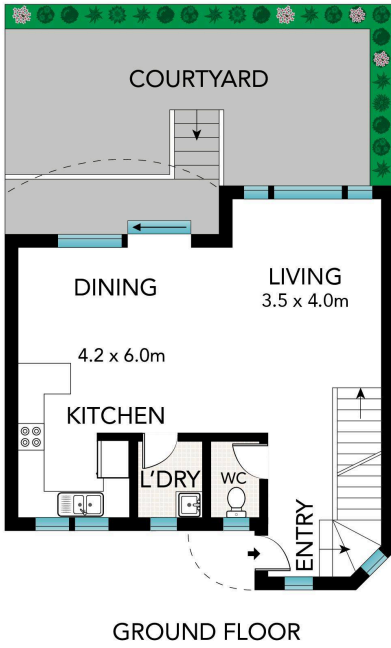


Jacki Williams 02 9719 8288

jackiw@wwre.com.au

Samuel Williams 02 9719 8288

samw@wwre.com.au



3/416 Great North Road, Abbotsford

Printed on 100% Recycled Paper

All information in this document has been gathered from various third party sources we believe to be reliable; however, we cannot guarantee its accuracy, and we accept no responsibility and disclaim all liability in respect to any errors, omissions, inaccuracies or misstatements in this document. Prospective purchasers are advised to carry out their own investigations and rely on their own enquiries.