



9/33 Walton Crescent

STYLISH TOWNHOME WITH BAY VIEWS

Occupying a prized NE corner position in an exclusive boutique collection of stylish bayside homes, this sun-filled townhome captures idyllic northerly water views from its private elevated setting. Set over two levels and featuring undercover access to a double lock-up garage, its located in a wonderful peninsula setting, a stones throw to the waterfront and an easy 400m stroll to the RiverCat and village cafs... *Stylish whole-floor living/dining with large windows maximising NE sunlight *Gran... for more information please visit our website

CAR	BATH	BED
2	2	2

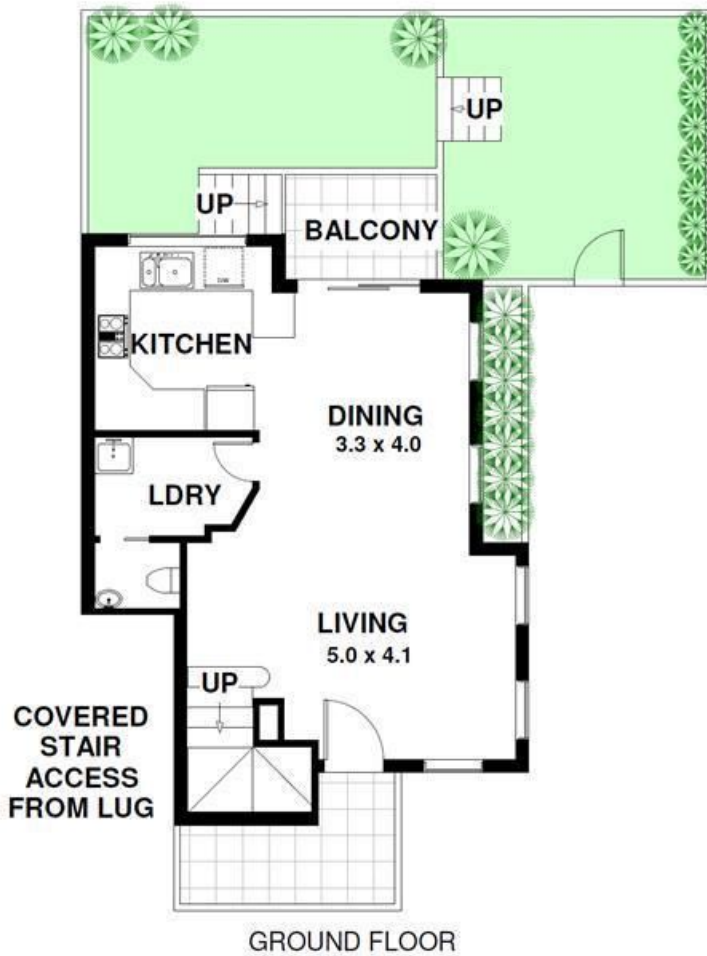
SOLD

Sold

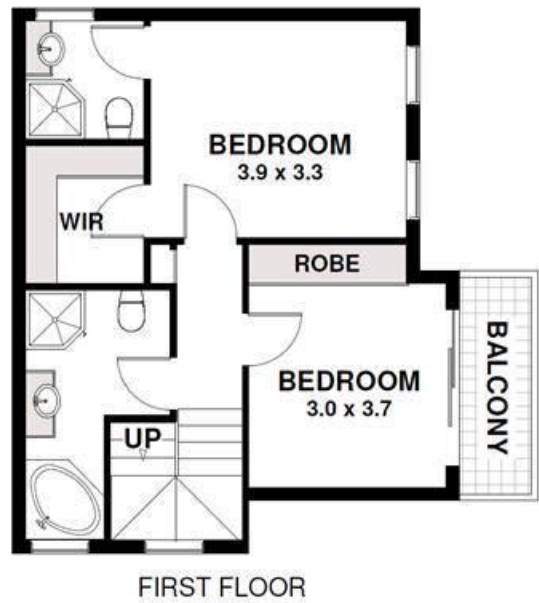


Adrian Sereni 02 9719 8288
adrians@wwre.com.au

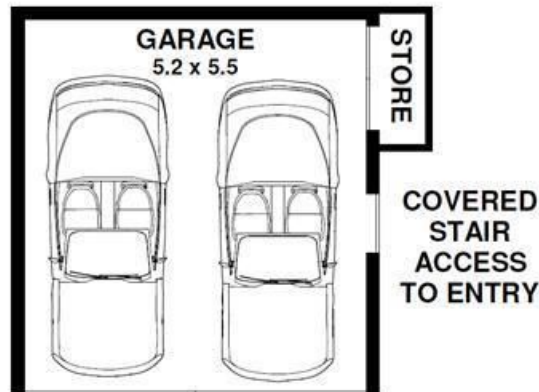
Disclaimer: In preparing this brochure, Warwick Williams and it's related franchisees has relied in good faith upon information provided by others and has made all reasonable efforts to ensure that the information is correct. The accuracy of the information provided to you (whether written or verbal) cannot be guaranteed. If you are considering this property, you must make all enquiries necessary to satisfy yourself that all information is accurate.



GROUND FLOOR



FIRST FLOOR



LOWER GROUND FLOOR

9/33 Walton Crescent, Abbotsford

DISCLAIMER CLAUSE The information contained in this brochure has been furnished to us by the vendors. The plan is provided as a guide only. While we trust it to be correct, we cannot guarantee its accuracy. Sizes and areas indicated are approximate only. We have not verified whether or not that information is accurate and do not have any belief one way or another in its accuracy. We do not accept any responsibility to any person for its accuracy and do no more than pass it on. All interested parties should make and rely on their own enquiries in order to determine whether or not this information is in fact accurate.