



22 Mons Street

## CALIFORNIA DREAMING – CLASSIC CHARM AND IDYLIC NORTH FACING GARDENS

Fine craftsmanship, north facing gardens and a private corner block create a warm and welcoming ambiance in this picturesque family home. Forming part of Mons Street's beautiful heritage streetscape, the double-fronted 1920s Californian bungalow is wrapped in lovely established gardens on a sunny dual access block on one of Russell Lea's finest streets. Enjoy as is or explore the potential to open out the rear and a second level (subject to council approval) capitalising on a prime address betwe... for more information please visit our website

Disclaimer: In preparing this brochure, Warwick Williams and it's related franchisees has relied in good faith upon information provided by others and has made all reasonable efforts to ensure that the information is correct. The accuracy of the information provided to you (whether written or verbal) cannot be guaranteed. If you are considering this property, you must make all enquiries necessary to satisfy yourself that all information is accurate.

CAR	BATH	BED
2	1	3

**SOLD**

Sold \$2,050,000

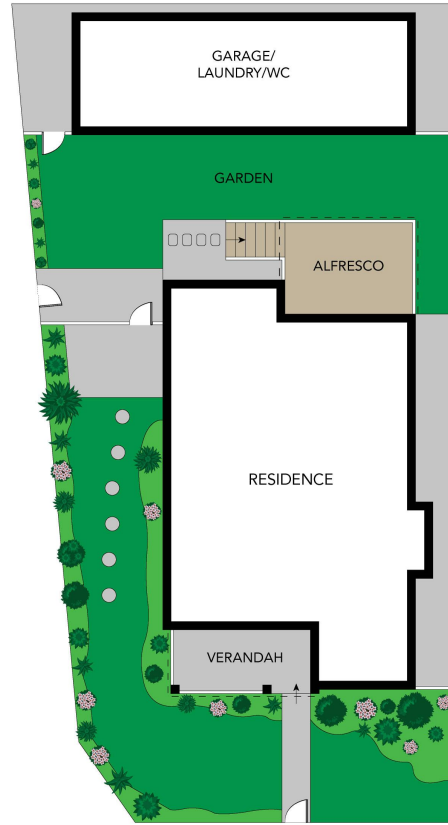
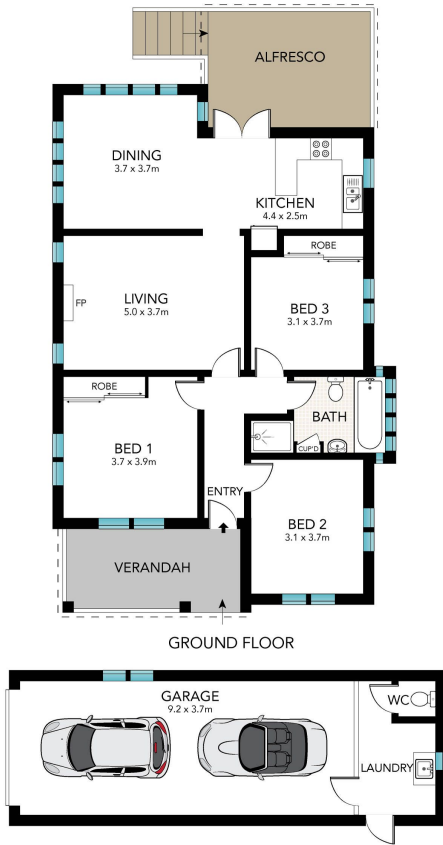


Craig Davies 02 9719 8288

craigd@wwre.com.au

Morgan Davies-Forsyth 02 9719 8288

morgand@wwre.com.au



0 1 2 3 4 5

Scale in metres. Indicative only. Dimensions are approximate. All information contained herein is gathered from sources we believe to be reliable. However, we cannot guarantee its accuracy and interested persons should rely on their own enquiries.

22 Mons Street, Russell Lea