



26 Clements Street

ART DECO TREASURE WITH PANORAMIC VIEWS AND EXTRAORDINARY POTENTIAL

A striking example of Art Deco architecture, this freestanding P&O inspired residence rests on a commanding double block in an exclusive enclave overlooking Iron Cove Bay. Designed in 1939 by Guy Crick, a noted architect responsible for many of the European modernist style theatres in Australia, the elegant two-storey home has enjoyed an elite provenance with only ever three families in ownership. A unique opportunity exists to sympathetically renovate or capitalise on its 24.38m frontage and 93... for more information please visit our website

Disclaimer: In preparing this brochure, Warwick Williams and its related franchisees has relied in good faith upon information provided by others and has made all reasonable efforts to ensure that the information is correct. The accuracy of the information provided to you (whether written or verbal) cannot be guaranteed. If you are considering this property, you must make all enquiries necessary to satisfy yourself that all information is accurate.

CAR	BATH	BED
4	3	3

SOLD

Sold \$5,150,000

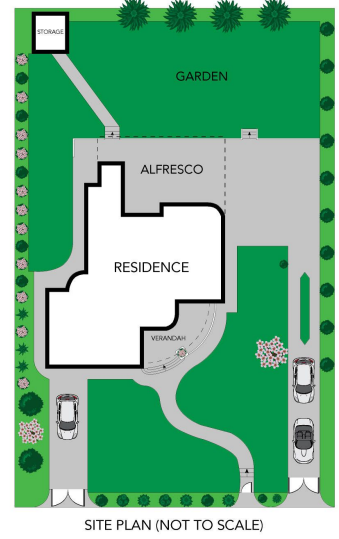
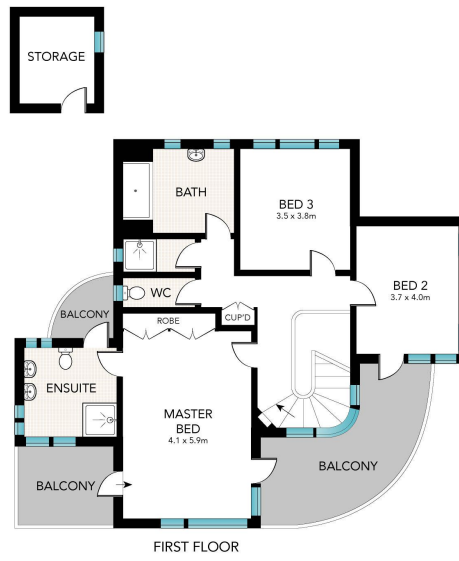
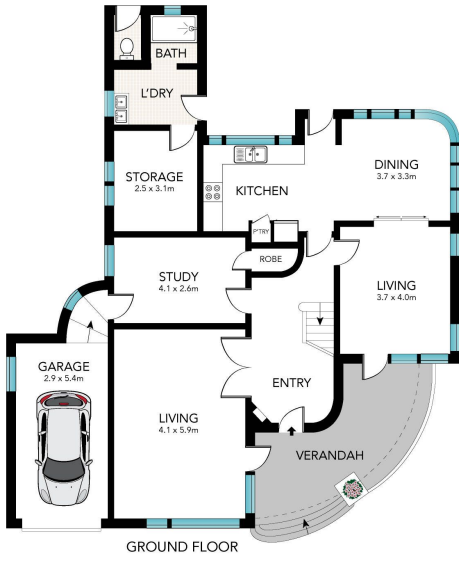


Adrian Sereni 02 9719 8288

adrians@wwre.com.au

Warwick Williams 02 9719 8288

ww@wwre.com.au



Scale in metres. Indicative only. Dimensions are approximate. All information contained herein is gathered from sources we believe to be reliable. However, we cannot guarantee its accuracy and interested persons should rely on their own enquiries.



26 Clements Street, Russell Lea