



236 Lyons Road

A PRIVATE FAMILY SANCTUARY WITH IDYLIC GARDENS

A tranquil setting amid enchanting established gardens affords this freestanding architect-redesigned 1920s family home a wonderful sense of privacy on over 518.5sqm (approx). Impeccably appointed interiors unite the old with the new via a spacious contemporary extension designed to embrace the outdoors and leading out to an idyllic park-like garden. Beautifully proportioned interiors, quality designer finishes and a choice of living areas create the perfect environment for family living and ent... for more information please visit our website

CAR	BATH	BED
2	2	3

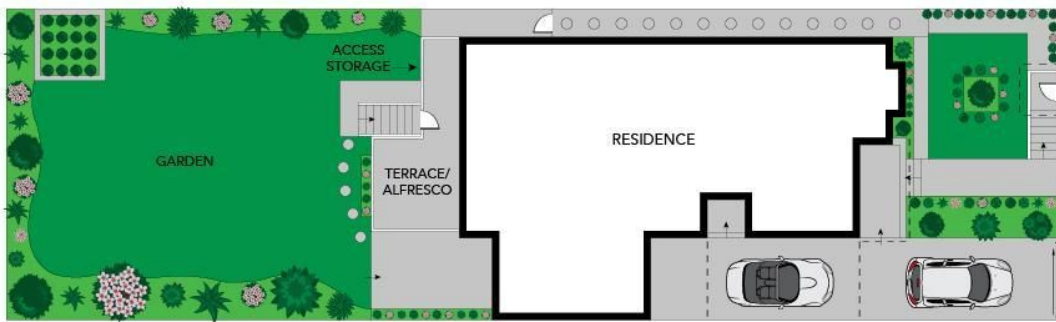
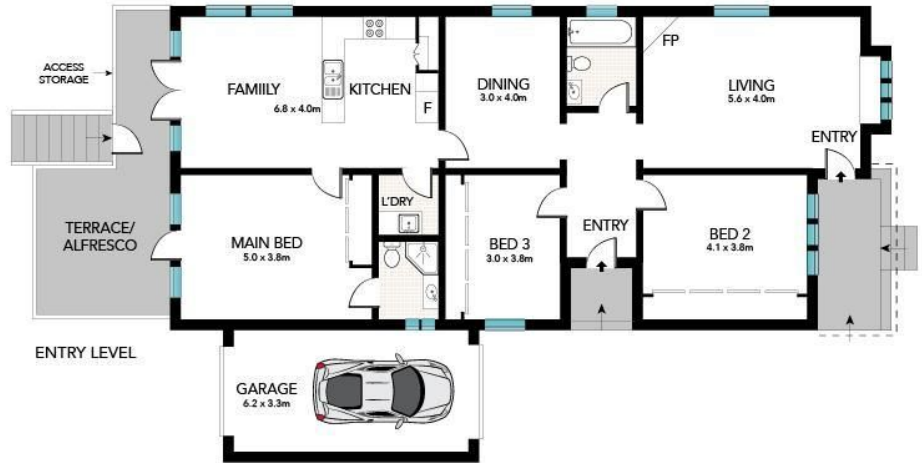
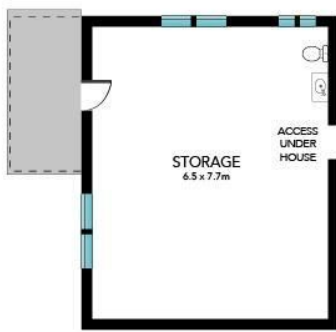
SOLD

Sold



Adrian Sereni 02 9719 8288
adrians@wwre.com.au

Disclaimer: In preparing this brochure, Warwick Williams and it's related franchisees has relied in good faith upon information provided by others and has made all reasonable efforts to ensure that the information is correct. The accuracy of the information provided to you (whether written or verbal) cannot be guaranteed. If you are considering this property, you must make all enquiries necessary to satisfy yourself that all information is accurate.



0 1 2 3 4 5

Scale in metres. Indicative only. Dimensions are approximate. All information contained herein is gathered from sources we believe to be reliable. However, we cannot guarantee its accuracy and interested persons should rely on their own enquiries.



236 Lyons Road, Russell Lea