



36 Bay Road

## FABULOUS HOME IN BAYSIDE LOCATION

Set on a peaceful street, Lindon is a wonderfully private freestanding brick home set on 656sqm and perfectly configured for the growing family seeking a relaxed lifestyle. Framed by beautifully manicured gardens and boasting top-level views over Five Dock Bay to the Gladesville Bridge, its just moments from the waters edge, parklands, schools, shops, cafes and city transport. Features: \* Light-filled stylish open plan kitchen & family living area \* North facing alfresco entertaining terrace off... for more information please visit our website  
Disclaimer: In preparing this brochure, Warwick Williams and it's related franchisees has relied in good faith upon information provided by others and has made all reasonable efforts to ensure that the information is correct. The accuracy of the information provided to you (whether written or verbal) cannot be guaranteed. If you are considering this property, you must make all enquiries necessary to satisfy yourself that all information is accurate.

CAR  
2

BATH  
2

BED  
5

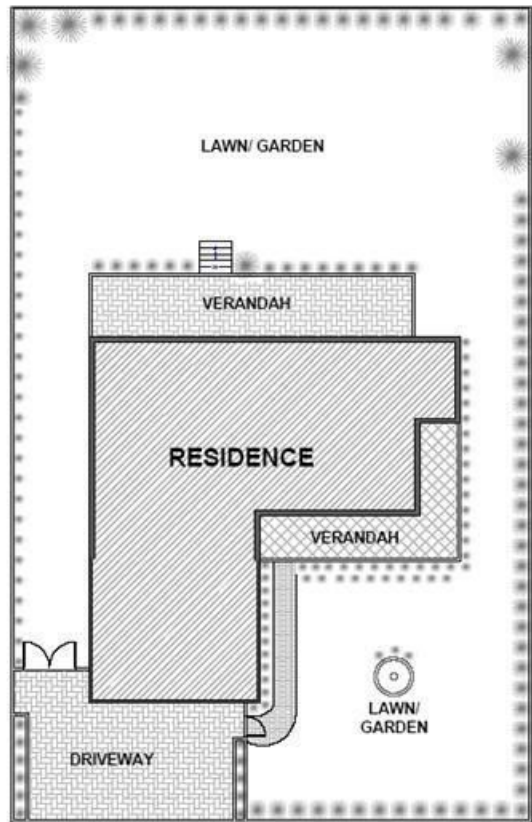
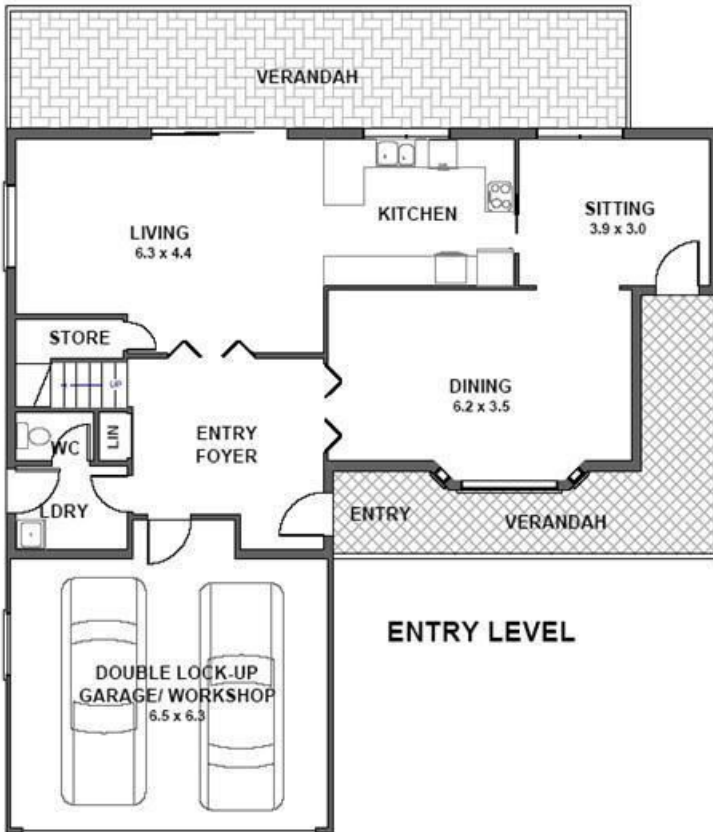
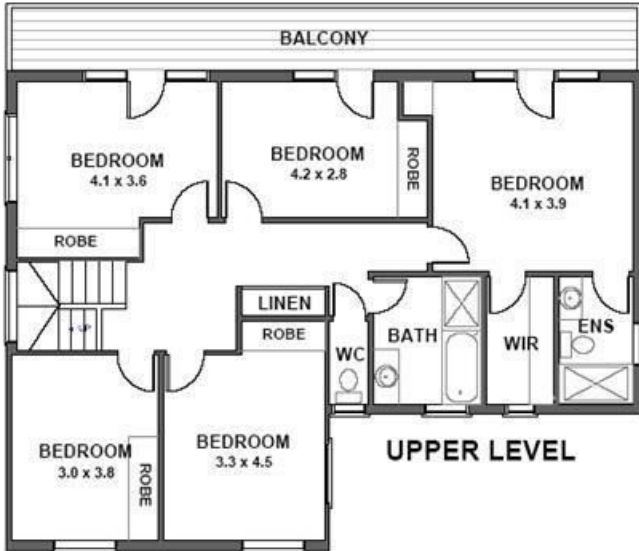
**SOLD**

Sold



Jacki Williams 02 9719 8288  
jackiw@wwre.com.au

# 36 Bay Road RUSSELL LEA



PLAN FOR PROMOTIONAL PURPOSES.  
LAYOUT/ DIMENSIONS ARE APPROX.  
NO LIABILITY WILL BE ACCEPTED