



24 Henley Marine Drive

## PARKFRONT SERENITY WITH MAGICAL CITYSCAPE VIEWS

Panoramic views over the lush open expanse of Timbrell Park and Iron Cove Bay to the city skyline create a spectacular backdrop to both levels of this freestanding parkfront home. A commanding setting affords a superb sense of privacy while its coveted setting with the Bay Run at the doorstep offers a superb waterfront lifestyle with close proximity to Five Dock village and easy access to the city. Immaculately presented, the four-bedroom home features a choice of outdoor living spaces and dual ... for more information please visit our website

CAR	BATH	BED
2	2	4

**SOLD**

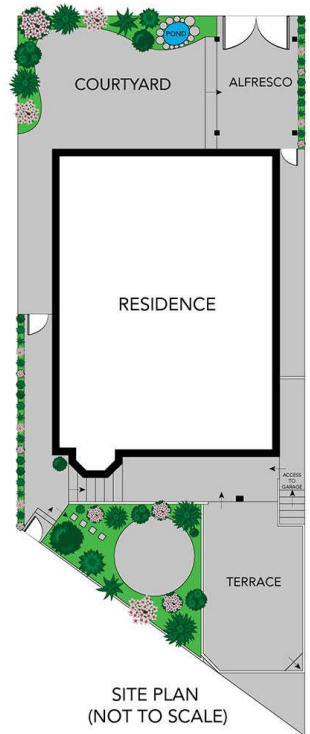
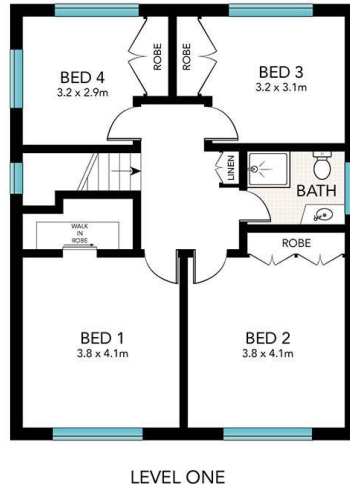
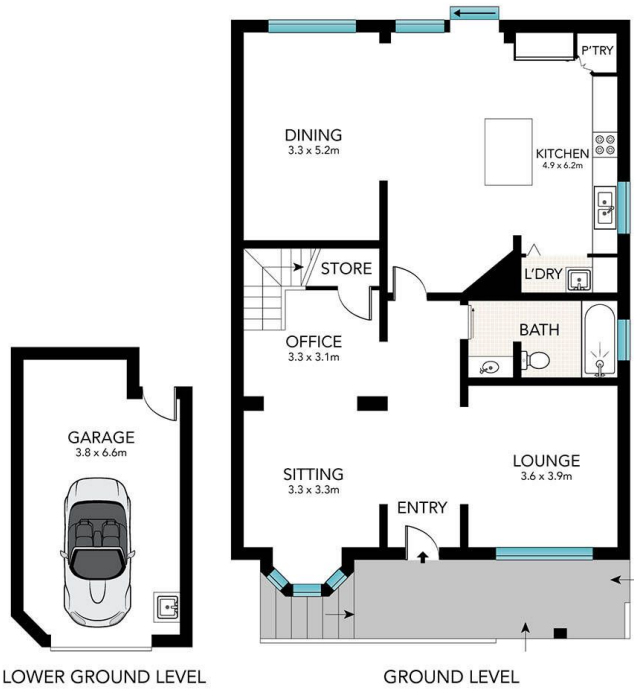
Sold



Jacki Williams 02 9719 8288

jackiw@wwre.com.au

Disclaimer: In preparing this brochure, Warwick Williams and its related franchisees has relied in good faith upon information provided by others and has made all reasonable efforts to ensure that the information is correct. The accuracy of the information provided to you (whether written or verbal) cannot be guaranteed. If you are considering this property, you must make all enquiries necessary to satisfy yourself that all information is accurate.



24 Henley Marine Drive, Drummoyne

**WATER RATES:** \$688 per Annum (approximately)  
**COUNCIL RATES:** \$1,578 per Annum (approximately)



All information in this document has been gathered from various third party sources we believe to be reliable; however, we cannot guarantee its accuracy, and we accept no responsibility and disclaim all liability in respect to any errors, omissions, inaccuracies or misstatements in this document. Prospective purchasers are advised to carry out their own investigations and rely on their own enquiries.