



21 Battersea Street

A DRESS-CIRCLE PENINSULA ENCLAVE, PANORAMIC VIEWS AND BESPOKE INTERIORS

Captivating 180-degree views over Battersea Park and The Bay create an ever-changing backdrop to the stylish interiors of this architect designed residence and set the scene for an enviable bayside lifestyle. A commanding elevated North facing setting with views from all three levels, every detail of the master-built home has been tastefully executed. Bespoke features and thoughtful design principles deliver an intimate home with a sense of light, space and openness throughout making it ideal fo... for more information please visit our website

Water Rate | \$1,046

Council Rate | \$2,824

Disclaimer: In preparing this brochure, Warwick Williams and it's related franchisees has relied in good faith upon information provided by others and has made all reasonable efforts to ensure that the information is correct. The accuracy of the information provided to you (whether written or verbal) cannot be guaranteed. If you are considering this property, you must make all enquiries necessary to satisfy yourself that all information is accurate.

CAR	BATH	BED
3	4	5

SOLD

Sold

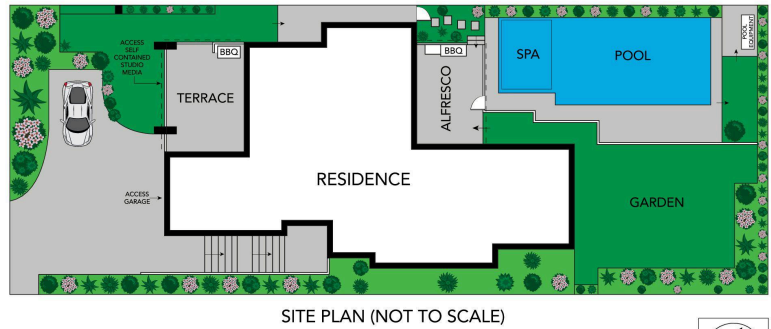
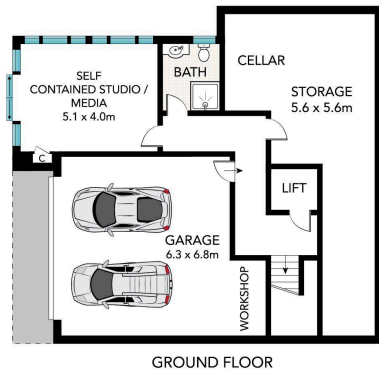
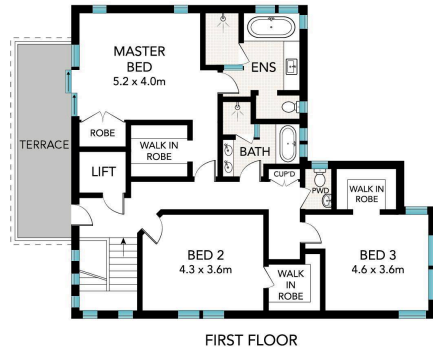


Conor Allen 02 9719 8288

conora@wwre.com.au

Warwick Williams 02 9719 8288

ww@wwre.com.au



21 Battersea Street, Abbotsford

All information in this document has been gathered from various third party sources we believe to be reliable; however, we cannot guarantee its accuracy, and we accept no responsibility and disclaim all liability in respect to any errors, omissions, inaccuracies or misstatements in this document. Prospective purchasers are advised to carry out their own investigations and rely on their own enquiries.