



47/18 Wolseley Street

PENTHOUSE-STYLE LUXURY WITH PANORAMIC NORTHERLY VIEWS

Panoramic unobstructed northerly water views to Hunters Hill take centre stage in this custom renovated house-sized apartment setting the scene for a world-class waterfront lifestyle. Holding the best position on the penthouse level of the upgraded Edgewater Bay, the luxurious three-bedroom apartment overlooks manicured waterfront gardens with a sunny pool, barbecue terrace, pontoon and private sandy beach affording a resort-like ambiance footsteps to Drummoyne Wharf. Opening to a view-swept ent... for more information please visit our website

Water Rate | \$590

Council Rate | \$1,125

Disclaimer: In preparing this brochure, Warwick Williams and its related franchisees has relied in good faith upon information provided by others and has made all reasonable efforts to ensure that the information is correct. The accuracy of the information provided to you (whether written or verbal) cannot be guaranteed. If you are considering this property, you must make all enquiries necessary to satisfy yourself that all information is accurate.

CAR	BATH	BED
2	2	3

SOLD

Sold \$1,800,000

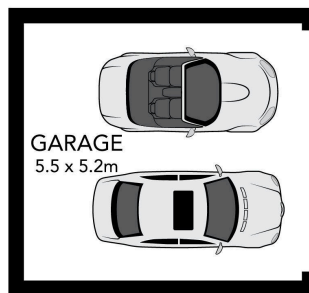
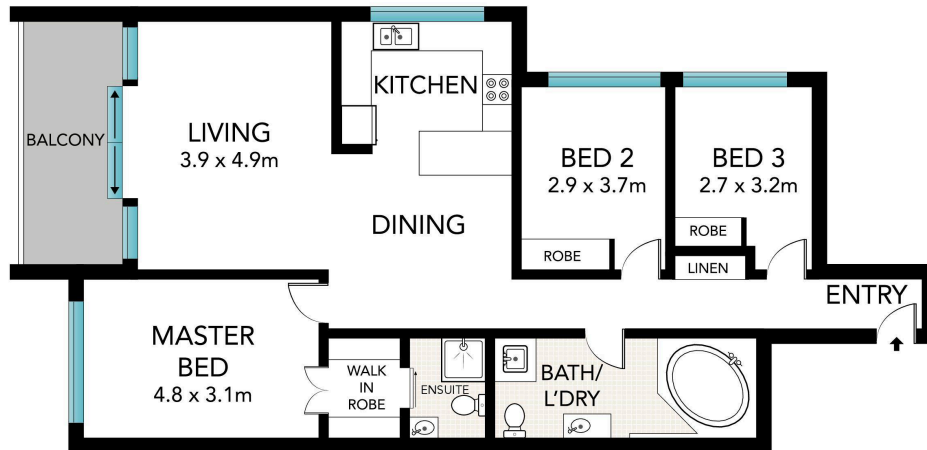


Craig Davies 02 9719 8288

craigd@wwre.com.au

Conor Allen 02 9719 8288

conora@wwre.com.au



47/18 Wolseley Street, Drummoyne

Printed on 100% Recycled Paper

All information in this document has been gathered from various third party sources we believe to be reliable; however, we cannot guarantee its accuracy, and we accept no responsibility and disclaim all liability in respect to any errors, omissions, inaccuracies or misstatements in this document. Prospective purchasers are advised to carry out their own investigations and rely on their own enquiries.