

1/12 Marlborough Street

PARK LIFE AND VILLAGE CONVENIENCE

Just across the street from Drummoyne Park, this bright and airy boutique apartment makes an ideal market entry or investment footsteps to Drummoyne village cafes and eateries. An elevated setting on the ground floor of a secure block of 12 captures the northerly sunlight while a well conceived layout features separate living and accommodation zones. Fresh, bright and move-in ready, the two-bedroom apartment comes with a lock-up garage on title and features a balcony with district views. Walk to... for more information please visit our website

Water Rate | \$716

Council Rate | \$1,250

Disclaimer: In preparing this brochure, Warwick Williams and it's related franchisees has relied in good faith upon information provided by others and has made all reasonable efforts to ensure that the information is correct. The accuracy of the information provided to you (whether written or verbal) cannot be guaranteed. If you are considering this property, you must make all enquiries necessary to satisfy yourself that all information is accurate.

| | | |
|-----|------|-----|
| CAR | BATH | BED |
| 1 | 1 | 2 |

SOLD

Sold

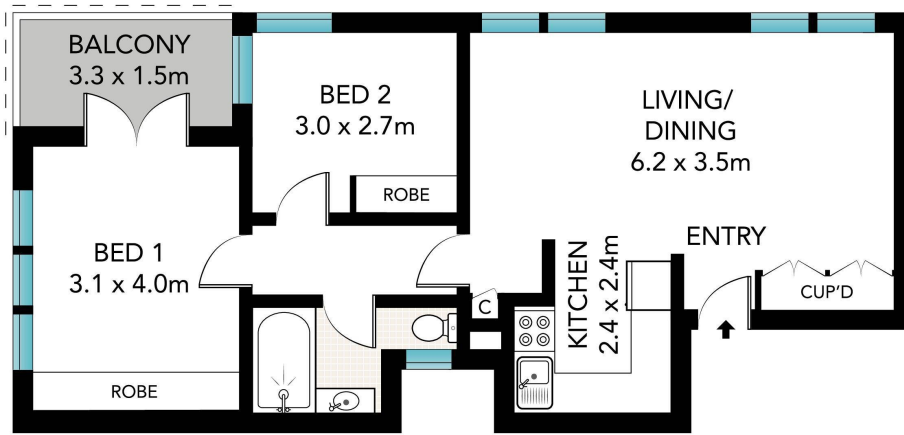


Jacki Williams 02 9719 8288

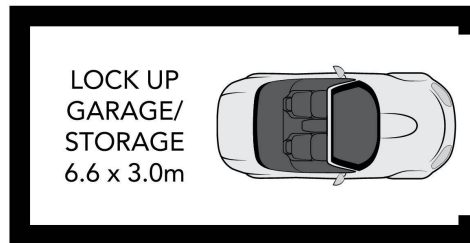
jackiw@wwre.com.au

Samuel Williams 02 9719 8288

samw@wwre.com.au



ELEVATED GROUND FLOOR



GROUND FLOOR



1/12 Marlborough Street, Drummoyne

Printed on 100% Recycled Paper

All information in this document has been gathered from various third party sources we believe to be reliable; however, we cannot guarantee its accuracy, and we accept no responsibility and disclaim all liability in respect to any errors, omissions, inaccuracies or misstatements in this document. Prospective purchasers are advised to carry out their own investigations and rely on their own enquiries.