



6/72 Wrights Road

A WATERFRONT SANCTUARY WITH CAPTIVATING VIEWS

Panoramic views over Drummoyne Bay and the Harbour Bridge create a magical backdrop to this private sanctuary and set the scene for the ultimate in waterfront living. A perfect north aspect, generous layout and direct level access to tandem car spaces make this one of the best in a block of only 12 in which apartments rarely trade. Enjoy the view from your terrace, soak up the sun in the sprawling gardens, relax by the pool or take to the waters from the pontoon and slipway. * Unobstructed views... for more information please visit our website

CAR	BATH	BED
2	2	3

SOLD

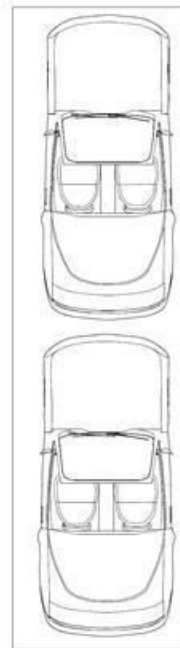
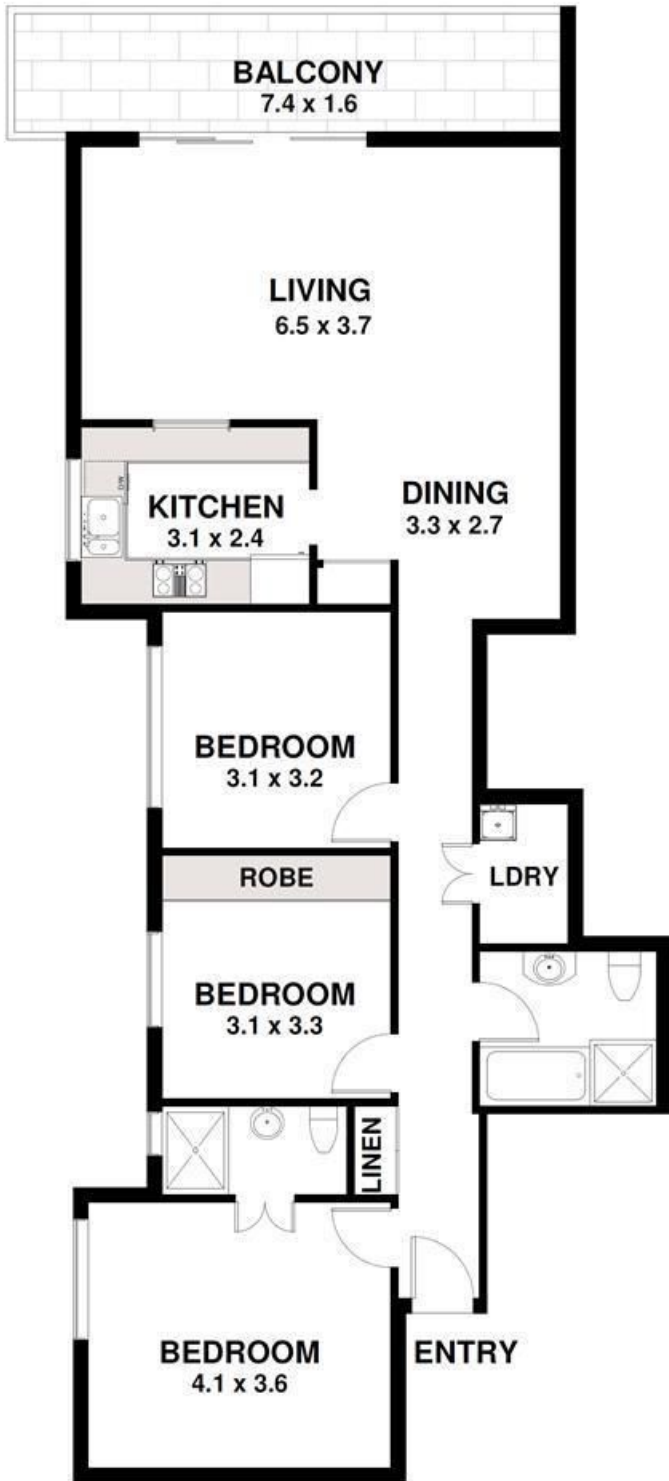
Sold



Craig Davies 02 9719 8288

craigd@wwre.com.au

Disclaimer: In preparing this brochure, Warwick Williams and its related franchisees has relied in good faith upon information provided by others and has made all reasonable efforts to ensure that the information is correct. The accuracy of the information provided to you (whether written or verbal) cannot be guaranteed. If you are considering this property, you must make all enquiries necessary to satisfy yourself that all information is accurate.



**TANDEM
UNDERCOVER
PARKING
(ON TITLE)**



**STORAGE
CAGE
(ON TITLE)**

Apartment 6, 72 Wrights Road, Drummoyne

DISCLAIMER CLAUSE The information contained in this brochure has been furnished to us by the vendors. The plan is provided as a guide only. While we trust it to be correct, we cannot guarantee its accuracy. Sizes and areas indicated are approximate only. We have not verified whether or not that information is accurate and do not have any belief one way or another in its accuracy. We do not accept any responsibility to any person for its accuracy and do no more than pass it on. All interested parties should make and rely on their own enquiries in order to determine whether or not this information is in fact accurate.