



8/22 Collingwood Street

## DUAL LEVEL APARTMENT WITH PANORAMIC VIEWS

Panoramic water views stretching to the iconic Harbour Bridge create a mesmerising backdrop to this house-like dual level apartment. Offering easy level entry in the secure Aqualuna, it features whole-floor living space opening out to a huge North-East facing terrace and three upper level bedrooms all opening to a balcony. Set in a premier east side locale, its 300m to the ferry and close to village life and parkland. \* Dramatic water views over Spectacle Island to the bridge from both levels \* ... for more information please visit our website

Disclaimer: In preparing this brochure, Warwick Williams and it's related franchisees has relied in good faith upon information provided by others and has made all reasonable efforts to ensure that the information is correct. The accuracy of the information provided to you (whether written or verbal) cannot be guaranteed. If you are considering this property, you must make all enquiries necessary to satisfy yourself that all information is accurate.

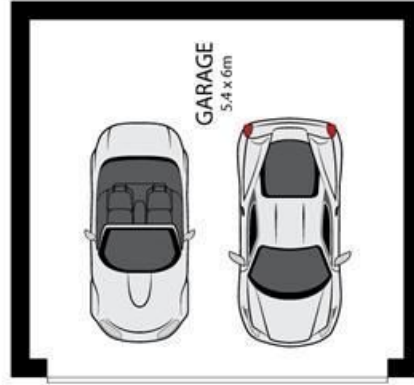
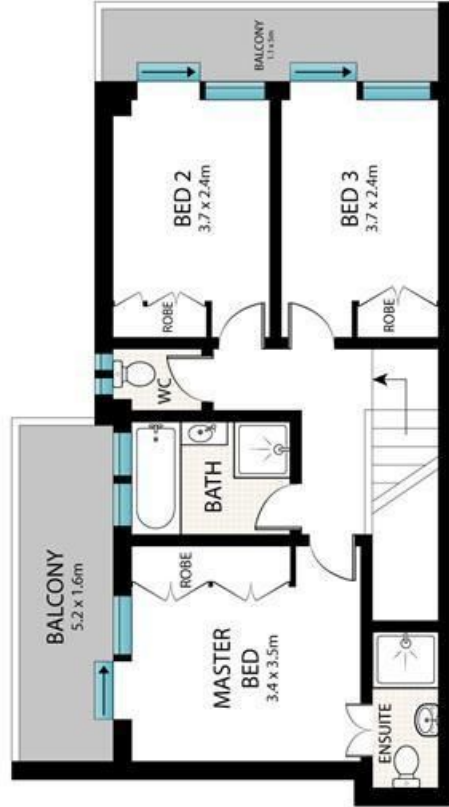
CAR	BATH	BED
2	2	3

**SOLD**

Sold



Adrian Sereni 02 9719 8288  
adrians@wwre.com.au



Scale in metres. Indicative only. Dimensions are approximate. All information contained herein is gathered from sources we believe to be reliable. However, we cannot guarantee its accuracy and interested persons should rely on their own enquiries.



8/22 Collingwood Street, Drummoyne