



5/345 Victoria Place

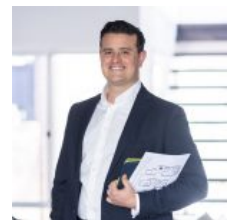
### SUPERB WATERFRONT FACILITIES

Set in a peaceful peninsula enclave, this top floor apartment captures dynamic dual perspectives from its bright top floor setting. Sunlit living space and the main bedroom gaze north over the Gladesville Bridge and the kitchen and second bedroom enjoy water glimpses over Five Dock Bay. Featuring direct access to the waterfront, its set in a waterfront complex with pool, jetty, pontoon and boat ramp. \* Sunlit living and dining with large windows opens to a northerly balcony \* Well presented kitc... for more information please visit our website

CAR	BATH	BED
1	1	2

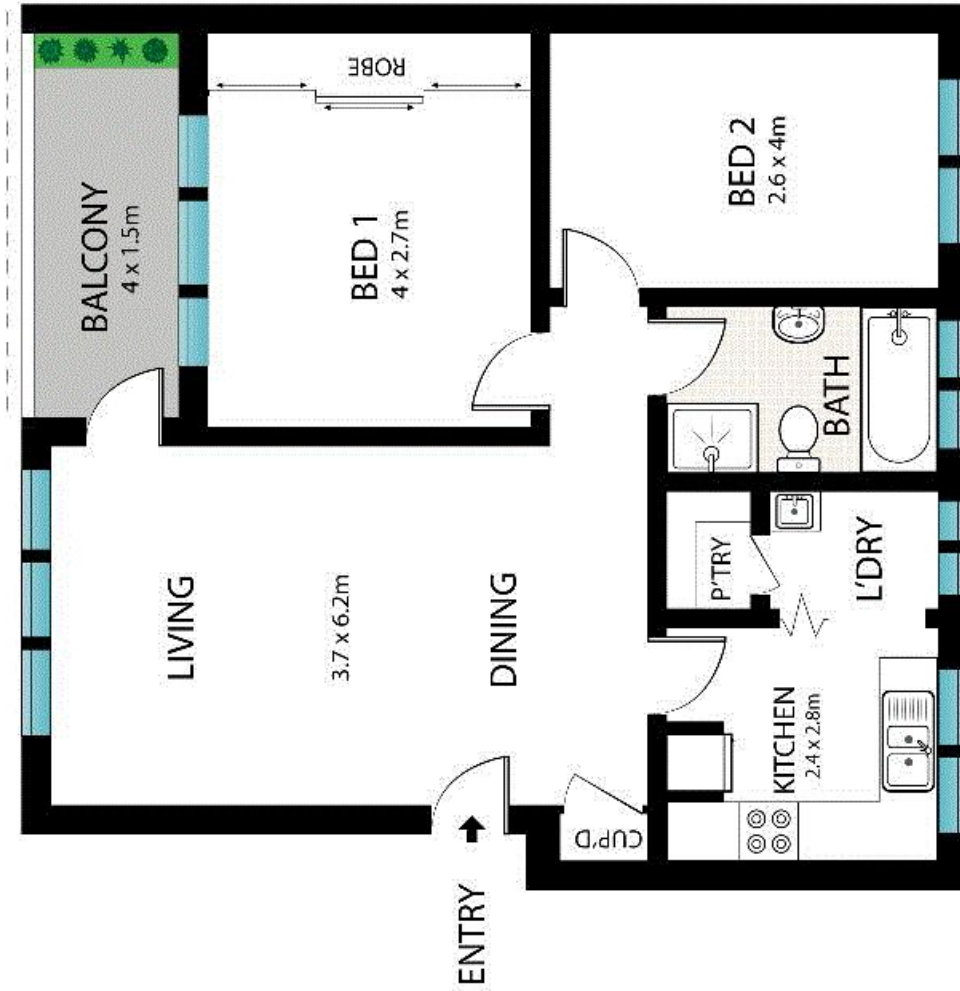
**SOLD**

Sold

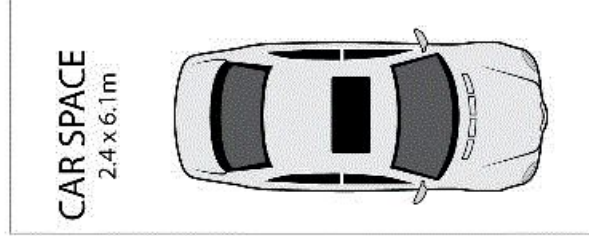


Adrian Sereni 02 9719 8288  
adrians@wwre.com.au

Disclaimer: In preparing this brochure, Warwick Williams and its related franchisees has relied in good faith upon information provided by others and has made all reasonable efforts to ensure that the information is correct. The accuracy of the information provided to you (whether written or verbal) cannot be guaranteed. If you are considering this property, you must make all enquiries necessary to satisfy yourself that all information is accurate.



Scale in metres. Indicative only. Dimensions are approximate. All information contained herein is gathered from sources we believe to be reliable. However, we cannot guarantee its accuracy and interested persons should rely on their own enquiries.



**GROUND LEVEL**



5/345 Victoria Place, Drummoyne