



1/22 Wolseley Street

## ABSOLUTE WATERFRONT SANCTUARY WITH UNOBSTRUCTED BAY VIEWS

PRICE GUIDE: \$800,000+ Basking in a perfect due north aspect, this elegantly appointed waterfront apartment offers relaxed living in a beautiful resort-style setting. Framed in breathtaking views over sun soaked manicured gardens and glistening waters of Drummoyle Bay, it features a generous layout with deep entertainers balcony and sunlit dining room with potential as a sitting room or third bedroom. Footsteps to the city ferry, it offers easy access to a sparkling pool, bbq terrace and boat ra... for more information please visit our website

Disclaimer: In preparing this brochure, Warwick Williams and it's related franchisees has relied in good faith upon information provided by others and has made all reasonable efforts to ensure that the information is correct. The accuracy of the information provided to you (whether written or verbal) cannot be guaranteed. If you are considering this property, you must make all enquiries necessary to satisfy yourself that all information is accurate.

CAR	BATH	BED
1	2	2

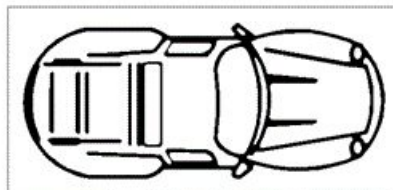
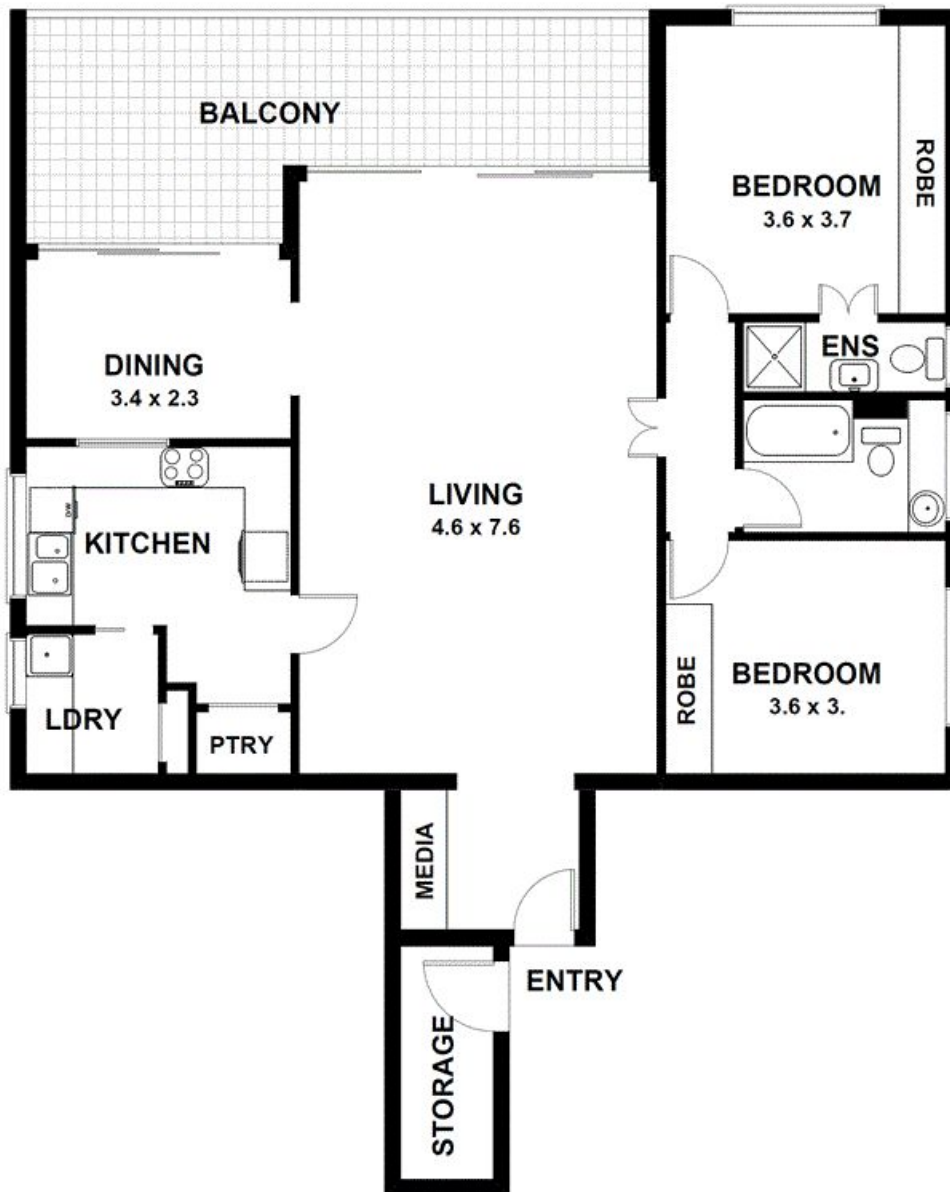
**SOLD**

Sold \$855,000



Craig Davies 02 9719 8288

craigd@wwre.com.au



UNDERCOVER SECURITY CARSPACE

## Apartment 1, 22 Wolseley Street, Drummoyne

**DISCLAIMER CLAUSE** The information contained in this brochure has been furnished to us by the vendors. The plan is provided as a guide only. While we trust it to be correct, we cannot guarantee its accuracy. Sizes and areas indicated are approximate only. We have not verified whether or not that information is accurate and do not have any belief one way or another in its accuracy. We do not accept any responsibility to any person for its accuracy and do no more than pass it on. All interested parties should make and rely on their own enquiries in order to determine whether or not this information is in fact accurate.