



2/26 Westbourne Street

TRANQUIL WATERSIDE APARTMENT WITH LOVELY BAY VIEWS

Capturing picturesque views over Five Dock Bay from its secluded rear position, this bright and breezy boutique apartment enjoys a fabulous waterside setting on the edge of Drummoyne Park. Peaceful and private, its wrapped in windows on three sides with freshly schemed interiors opening to a full-length balcony overlooking the boat-filled waters. Footsteps to the newly upgraded boat ramp, Bay Run and foreshore cycleway, its a short stroll to the city ferry and village heart. Features: * Well mai... for more information please visit our website

Disclaimer: In preparing this brochure, Warwick Williams and it's related franchisees has relied in good faith upon information provided by others and has made all reasonable efforts to ensure that the information is correct. The accuracy of the information provided to you (whether written or verbal) cannot be guaranteed. If you are considering this property, you must make all enquiries necessary to satisfy yourself that all information is accurate.

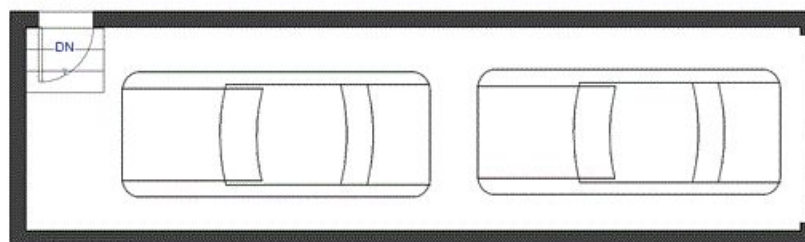
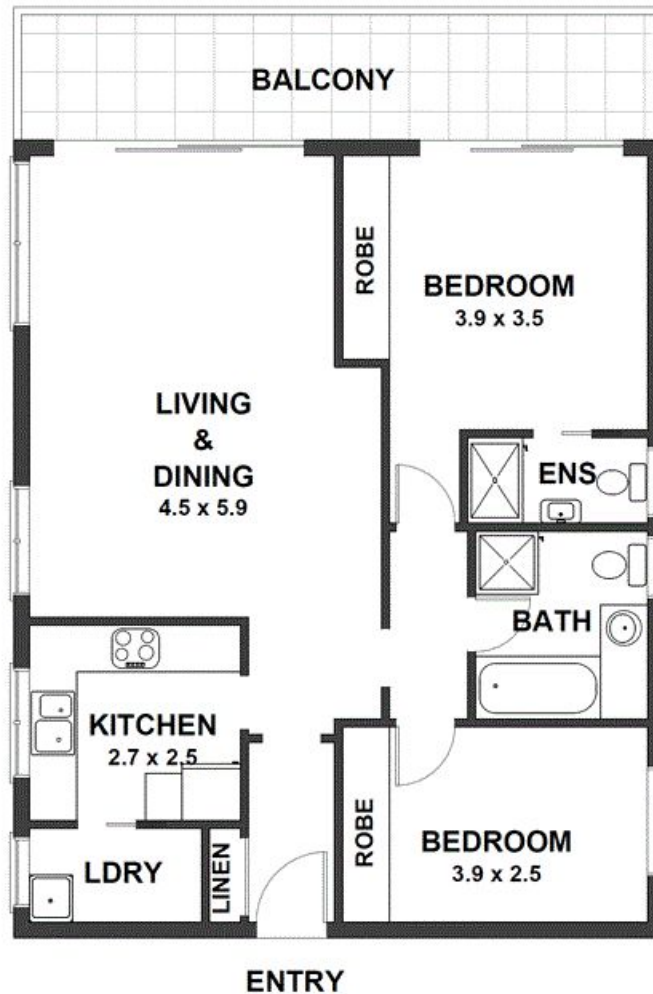
CAR	BATH	BED
2	2	2

SOLD

Sold



Jacki Williams 02 9719 8288
jackiw@wwre.com.au



**GARAGE - 2 SMALL CARS
(W/LOFT STORAGE)**
9.9 x 2.6

Apartment 2, 26 Westbourne Street, Drummoyne

DISCLAIMER CLAUSE The information contained in this brochure has been furnished to us by the vendors. The plan is provided as a guide only. While we trust it to be correct, we cannot guarantee its accuracy. Sizes and areas indicated are approximate only. We have not verified whether or not that information is accurate and do not have any belief one way or another in its accuracy. We do not accept any responsibility to any person for its accuracy and do no more than pass it on. All interested parties should make and rely on their own enquiries in order to determine whether or not this information is in fact accurate.