



26/35 Marlborough Street

GRAND VICTORIAN MANOR LUXURY, CHARM & CONVENIENCE

Unique within a grand and tightly held converted Victorian manor, this tastefully refurbished ground floor apartment features house-like proportions, refined features, exclusive dual access with private entry and lock-up garage. With a superb flow-through design and easy access to a sparkling pool and bbq terrace, it effortlessly blends period charm with contemporary comfort in a sought-after bayside locale. Features: * Stately forecourt entry, prized setting in secure complex * Gracious entry h... for more information please visit our website

CAR	BATH	BED
1	2	2

SOLD

Sold



Warwick Williams Real Estate
drummlease@wwre.com.au

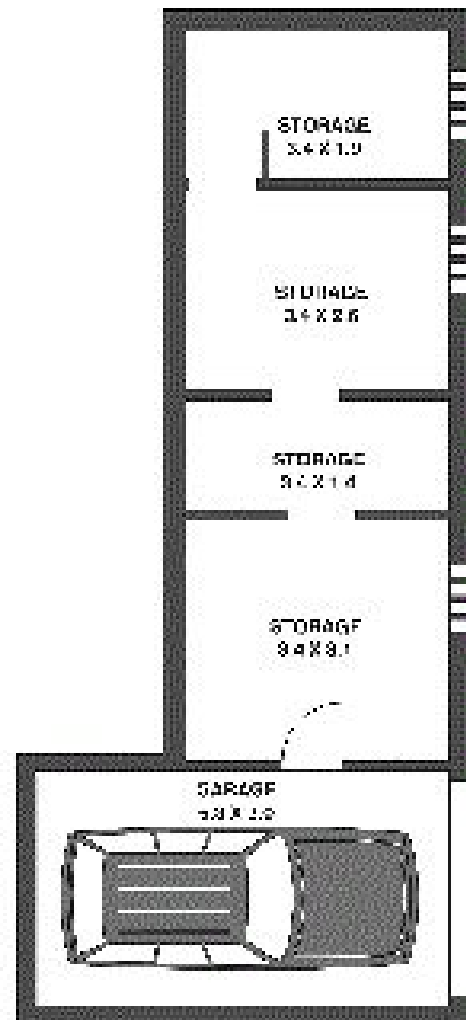
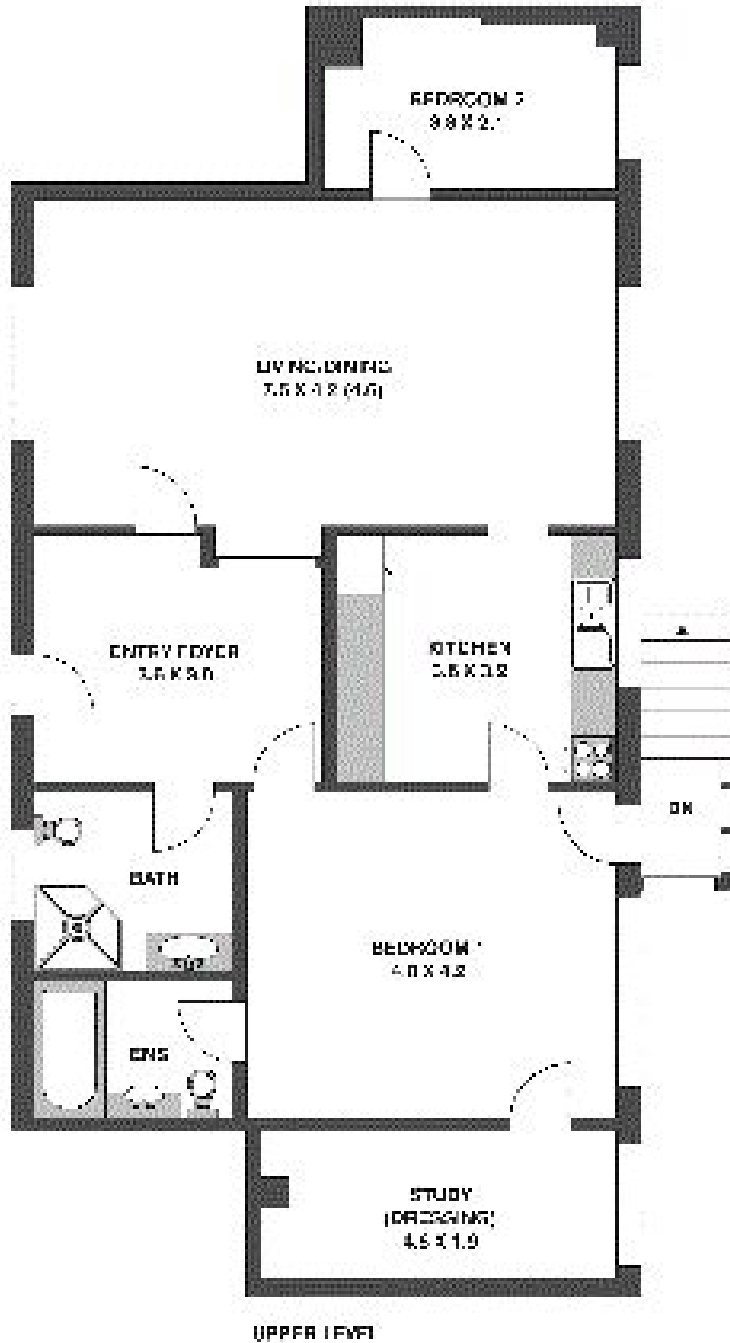
Disclaimer: In preparing this brochure, Warwick Williams and its related franchisees has relied in good faith upon information provided by others and has made all reasonable efforts to ensure that the information is correct. The accuracy of the information provided to you (whether written or verbal) cannot be guaranteed. If you are considering this property, you must make all enquiries necessary to satisfy yourself that all



information is accurate.



2935 Marlborough Street
DROMEDRYNE



This floor plan is provided as a guide only. It is not intended to be used as a legal document. The dimensions and room names are for informational purposes only. The actual layout and dimensions may vary from the floor plan shown. The floor plan is not to be used for any other purpose without the written consent of Shallitsua Productions.