



22a/14 Wolseley Street

EAST SIDE WATERFRONT LIVING

Water views to Hunters Hill from the balcony of this two bedroom apartment in this waterfront complex & is ready for you to upgrade to your own requirements. Located on the first floor of this security building with only six apartments accessing this stairwell. Resort style waterfront facilities including inground swimming pool with glass surrounds, manicured gardens & lawns with BBQ area & boat ramp. • Spacious L-shaped living/dining • Sunny east facing balcony with water views to H... for more information please visit our website

Water Rate | \$685

Council Rate | \$1,325

Disclaimer: In preparing this brochure, Warwick Williams and it's related franchisees has relied in good faith upon information provided by others and has made all reasonable efforts to ensure that the information is correct. The accuracy of the information provided to you (whether written or verbal) cannot be guaranteed. If you are considering this property, you must make all enquiries necessary to satisfy yourself that all information is accurate.

CAR	BATH	BED
1	1	2

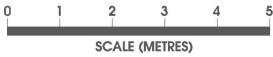
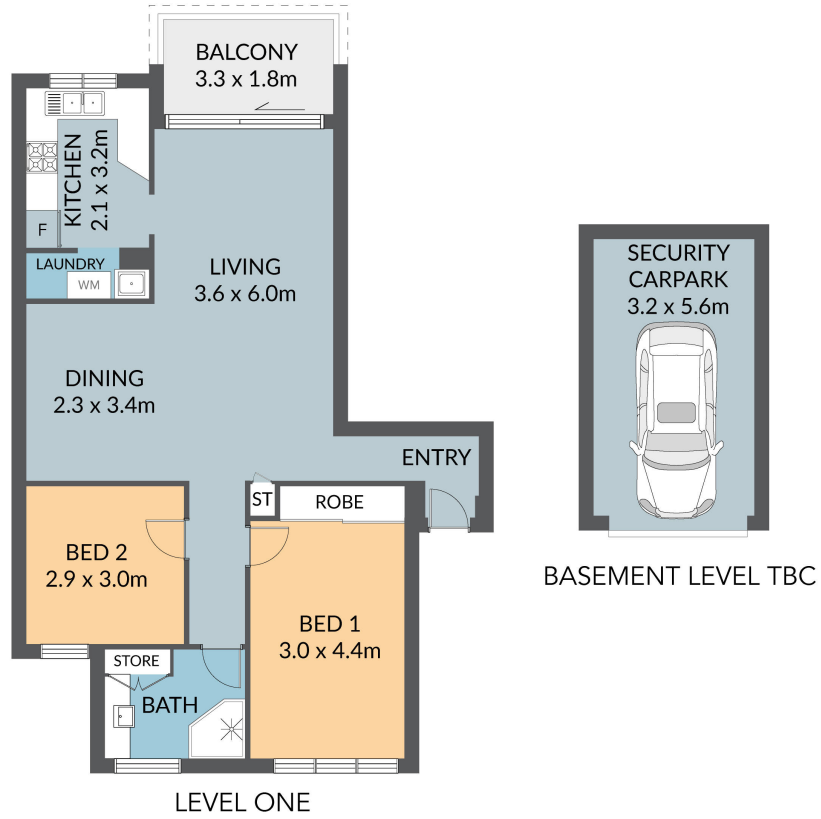
FOR SALE

\$1,149,000.00



Craig Davies 02 9719 8288

craigd@wwre.com.au



22A/14 Wolseley Street, Drummoyne

All information in this document has been gathered from various third party sources we believe to be reliable; however, we cannot guarantee its accuracy, and we accept no responsibility and disclaim all liability in respect to any errors, omissions, inaccuracies or misstatements in this document. Prospective purchasers are advised to carry out their own investigations and rely on their own enquiries.