

21/54 Blackwall Point Road

STYLISH BAYSIDE LIVING WITH A LOFTY WAREHOUSE FEEL

A prized top floor setting in a striking 1930s converted warehouse affords this sleek contemporary apartment a superb sense of peace and privacy. Opening to a north facing winter garden, the two bedroom plus study apartment is unique in the Chiswick Green complex with high ceilings, polished floorboards and huge industrial style windows giving the apartment a warehouse-like feel. Bordered by lush parkland and embraced by the idyllic bays of Sydney Harbour, it's a short walk to Chiswick ferry wha... for more information please visit our website

Water Rate | \$719

Council Rate | \$1,125

Disclaimer: In preparing this brochure, Warwick Williams and it's related franchisees has relied in good faith upon information provided by others and has made all reasonable efforts to ensure that the information is correct. The accuracy of the information provided to you (whether written or verbal) cannot be guaranteed. If you are considering this property, you must make all enquiries necessary to satisfy yourself that all information is accurate.

CAR	BATH	BED
2	2	2

SOLD

Sold \$852,000

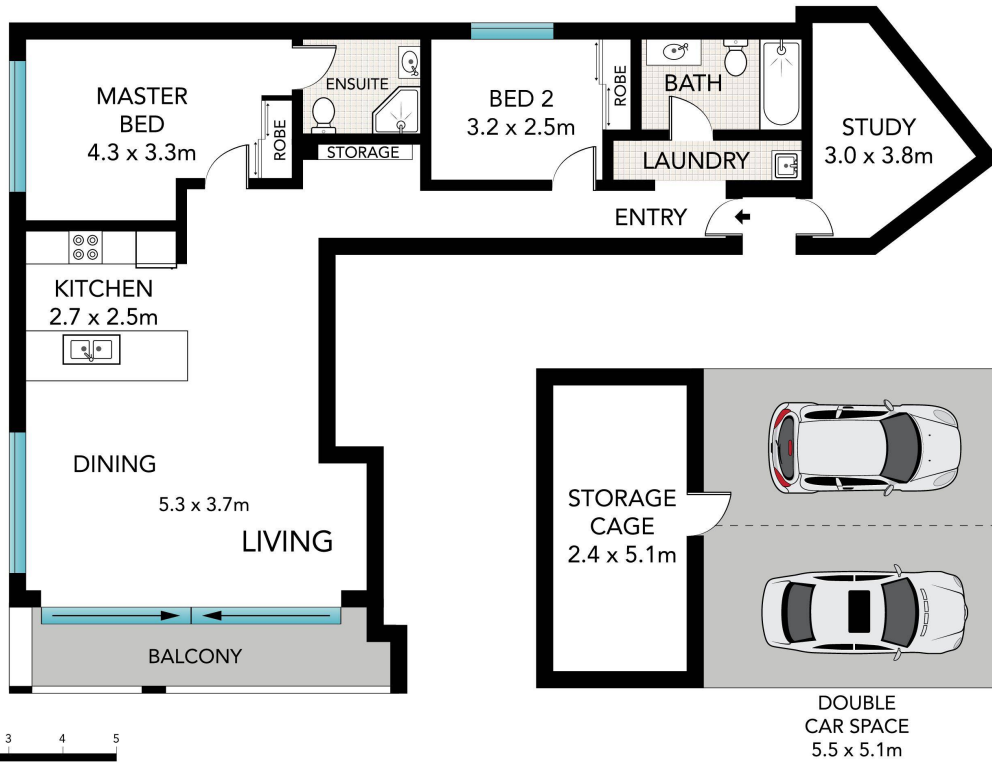


Conor Allen 02 9719 8288

conora@wwre.com.au

Adrian Sereni 02 9719 8288

adrians@wwre.com.au



21/54 Blackwall Point Road, Chiswick

Printed on 100% Recycled Paper

All information in this document has been gathered from various third party sources we believe to be reliable; however, we cannot guarantee its accuracy, and we accept no responsibility and disclaim all liability in respect to any errors, omissions, inaccuracies or misstatements in this document. Prospective purchasers are advised to carry out their own investigations and rely on their own enquiries.