



14/8 Bortfield Drive

TOP FLOOR SETTING WITH WATER VIEWS

Secluded from the road in the beautifully maintained 'Mandooon', the top floor apartment's idyllic surrounds and private outlook underline a sense of sanctuary with the convenience of being just 150m to the ferry wharf. Featuring a sheltered balcony for enjoying magical sunsets, the two-bedroom apartment features a lock-up garage on title and access to a sunny pool. • Two double bedrooms with built-ins, large main with water views • Spacious living and dining areas • Entertainer... for more information please visit our website

Water Rate | \$688

Council Rate | \$1,069

Disclaimer: In preparing this brochure, Warwick Williams and its related franchisees has relied in good faith upon information provided by others and has made all reasonable efforts to ensure that the information is correct. The accuracy of the information provided to you (whether written or verbal) cannot be guaranteed. If you are considering this property, you must make all enquiries necessary to satisfy yourself that all information is accurate.

CAR	BATH	BED
1	1	2

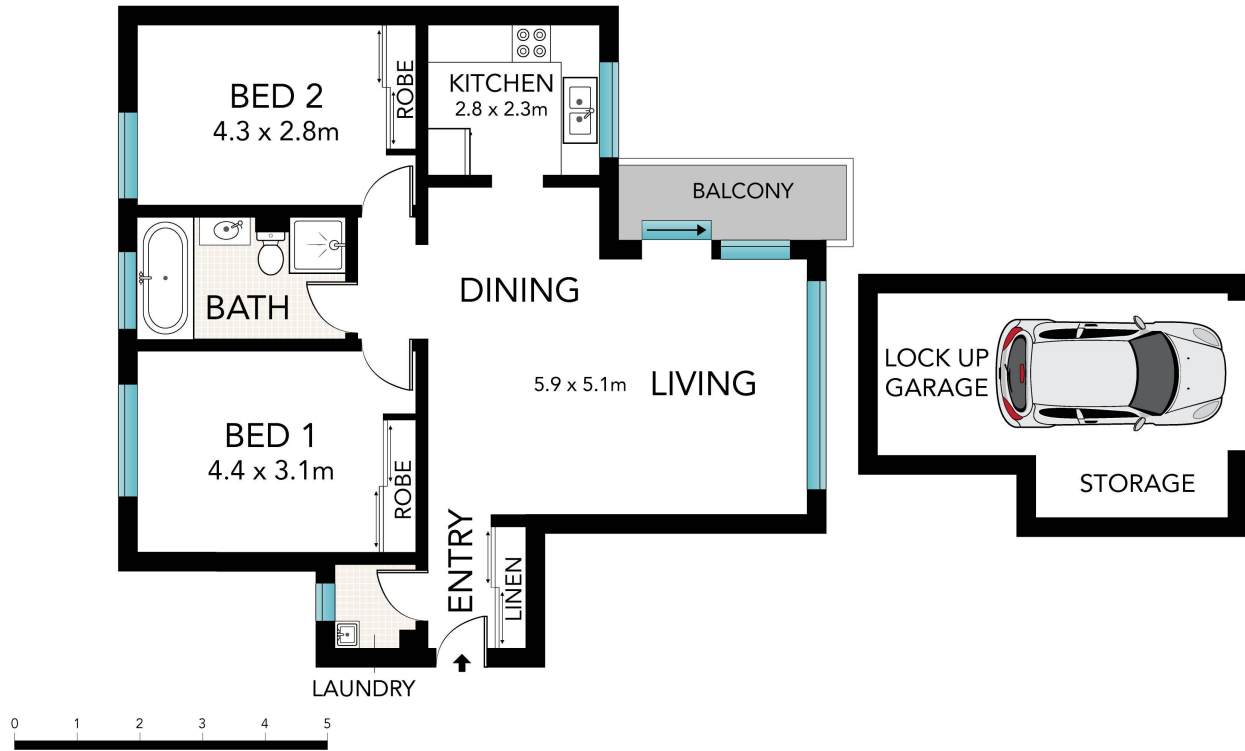
SOLD

Sold



Conor Allen 02 9719 8288

conora@wwre.com.au



14/8 Bortfield Drive, Chiswick


Printed on 100% Recycled Paper

All information in this document has been gathered from various third party sources we believe to be reliable; however, we cannot guarantee its accuracy, and we accept no responsibility and disclaim all liability in respect to any errors, omissions, inaccuracies or misstatements in this document. Prospective purchasers are advised to carry out their own investigations and rely on their own enquiries.