



23/8 Bortfield Drive

OPEN HOME CANCELLED - SATURDAY 3 MARCH

Recently refurbished and presented in impeccable condition, this tranquil waterside apartment is set in a quiet peninsula enclave virtually opposite the Chiswick ferry wharf. Set behind deep gardens to the rear of Mandoon, its spacious interiors are tastefully appointed and open to a good-sized balcony. A stones throw to waterfront parkland, it also features a lock-up garage and sunny common pool. * Entry hall leads into large living room with a dedicated dining alcove * Smart modern Bosch-appl... for more information please visit our website

CAR	BATH	BED
1	1	2

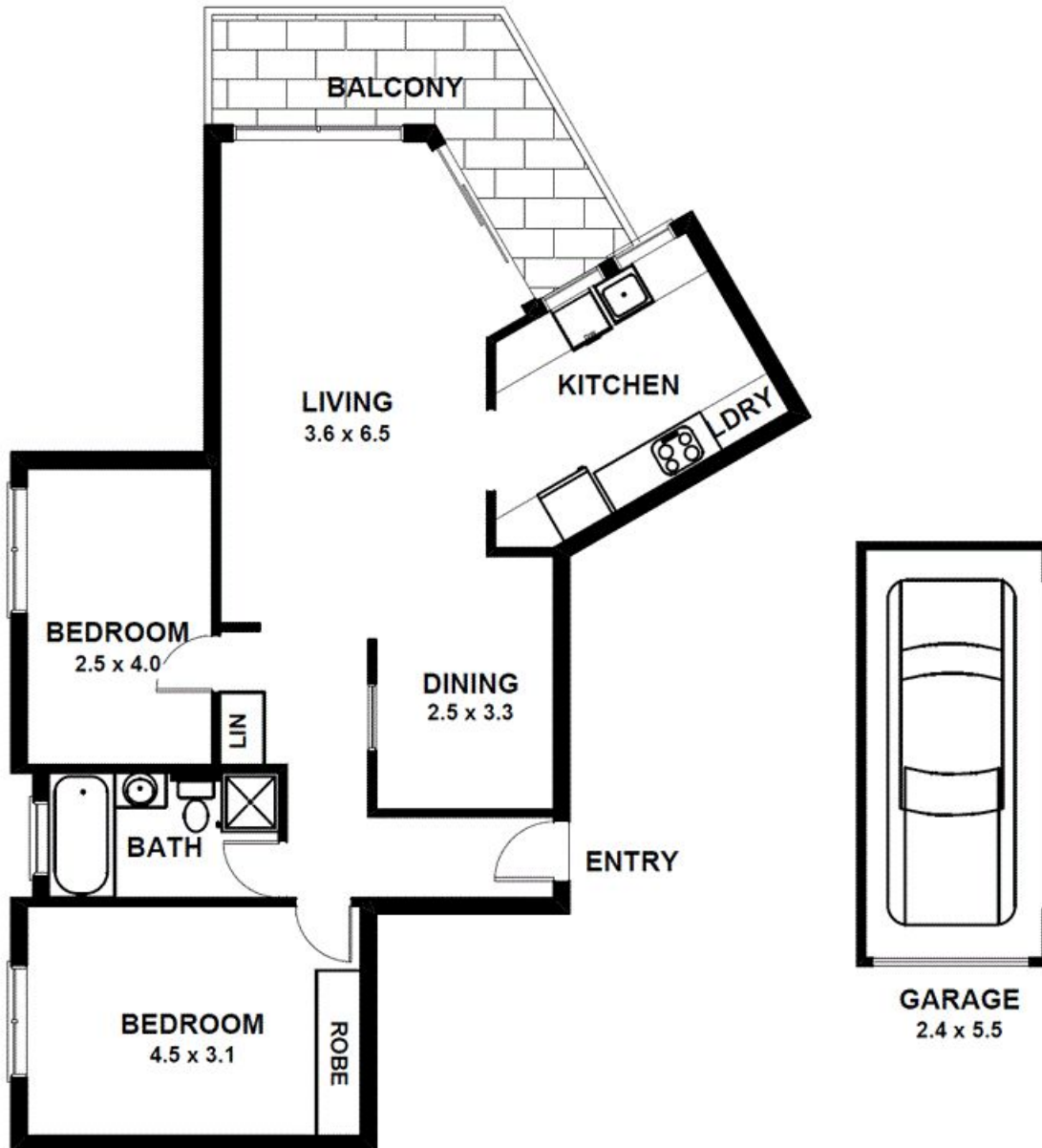
SOLD

Sold \$530,000



Warwick Williams Real Estate
drummlease@wwre.com.au

Disclaimer: In preparing this brochure, Warwick Williams and it's related franchisees has relied in good faith upon information provided by others and has made all reasonable efforts to ensure that the information is correct. The accuracy of the information provided to you (whether written or verbal) cannot be guaranteed. If you are considering this property, you must make all enquiries necessary to satisfy yourself that all information is accurate.



Apartment 23, 8 Bortfield Drive, Chiswick

DISCLAIMER CLAUSE The information contained in this brochure has been furnished to us by the vendors. The plan is provided as a guide only. While we trust it to be correct, we cannot guarantee its accuracy. Sizes and areas indicated are approximate only. We have not verified whether or not that information is accurate and do not have any belief one way or another in its accuracy. We do not accept any responsibility to any person for its accuracy and do no more than pass it on. All interested parties should make and rely on their own enquiries in order to determine whether or not this information is in fact accurate.