



28/25 Barr Street

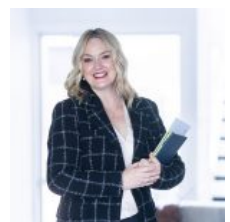
HIGH-END DESIGN IN THE CITY'S CREATIVE HUB

Designed by celebrated architects Marchese Partners, the Biscuit Factory is one of Sydney's most sought-after urban lifestyle addresses. Set in the vibrant Soho precinct of Camperdown, this sleek two-storey apartment has been crafted to integrate with its dynamic surrounds while offering a superb sense of space and excellent facilities. Renowned for its creative energy and urban buzz, Camperdown is a vibrant city enclave located opposite Sydney University, just 4km to the CBD. * Two upper level b... for more information please visit our website

CAR	BATH	BED
1	2	2

SOLD

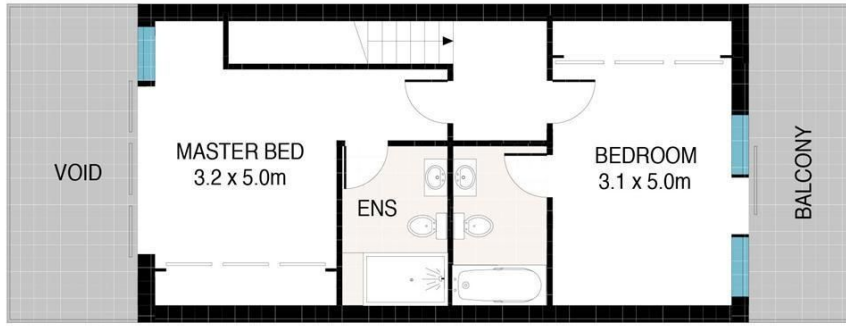
Sold



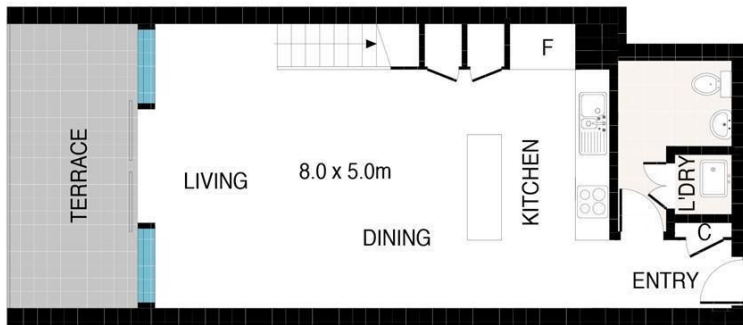
Jackie Williams 02 9719 8288

jackiw@wwre.com.au

Disclaimer: In preparing this brochure, Warwick Williams and its related franchisees has relied in good faith upon information provided by others and has made all reasonable efforts to ensure that the information is correct. The accuracy of the information provided to you (whether written or verbal) cannot be guaranteed. If you are considering this property, you must make all enquiries necessary to satisfy yourself that all information is accurate.

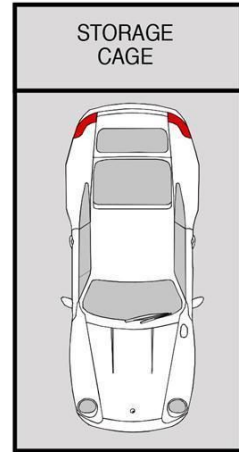


FIRST FLOOR



ENTRY LEVEL

SECURE
CAR SPACE
6.4 x 2.6m



Scale in metres. Indicative only. Dimensions are approximate. All information contained herein is gathered from sources we believe to be reliable. However, we cannot guarantee its accuracy and interested persons should rely on their own enquiries.

28/25 Barr Street, Camperdown