



1/440 Darling Street

## VILLAGE LIVING WITH A WAREHOUSE VIBE

A quiet setting to the rear of the block gives this warehouse-style apartment a superb sense of peace and privacy while its prime location in the heart of Darling Street offers an unbeatable village lifestyle. Featuring level entry from the street and direct access to secure parking, the spacious two-bedroom apartment is a short walk to Elkington Park and the scenic foreshore. Relax on the terrace, soak up the sunshine and city views from the common rooftop pool and barbecue area or step outside... for more information please visit our website

Disclaimer: In preparing this brochure, Warwick Williams and its related franchisees has relied in good faith upon information provided by others and has made all reasonable efforts to ensure that the information is correct. The accuracy of the information provided to you (whether written or verbal) cannot be guaranteed. If you are considering this property, you must make all enquiries necessary to satisfy yourself that all information is accurate.

CAR	BATH	BED
1	2	2

**SOLD**

Sold

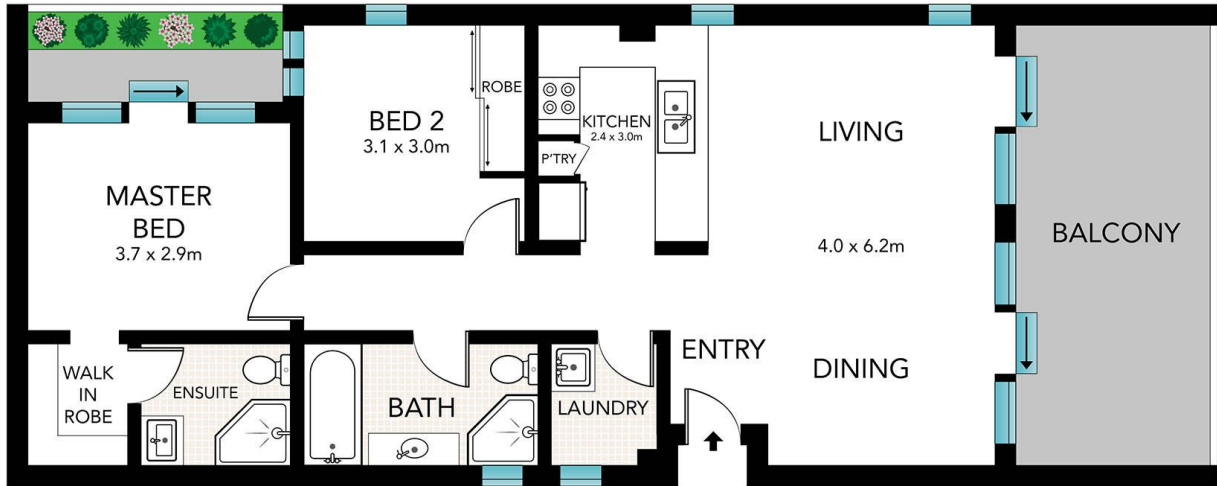


Adrian Sereni 02 9719 8288

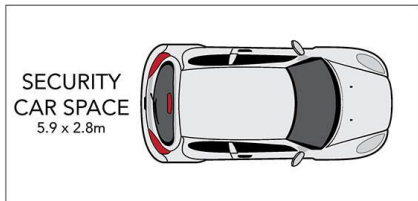
adrians@wwre.com.au

Morgan Davies-Forsyth 02 9719 8288

morgand@wwre.com.au



**AREA:** 99m<sup>2</sup> + 14m<sup>2</sup> Parking (approximately)  
**WATER RATES:** \$712.64 per Annum (approximately)  
**COUNCIL RATES:** \$1,190.00 per Annum (approximately)  
**STRATA LEVIES:** \$1,238.70 per Quarter (approximately)



1/440 Darling Street, Balmain



Printed on 100% Recycled Paper

All information in this document has been gathered from various third party sources we believe to be reliable; however, we cannot guarantee its accuracy, and we accept no responsibility and disclaim all liability in respect to any errors, omissions, inaccuracies or misstatements in this document. Prospective purchasers are advised to carry out their own investigations and rely on their own enquiries.