



4/1 Hutchinson Street

PARKSIDE SERENITY AND VILLAGE CONVENIENCE

Leafy views and a bright northerly aspect bring a sense of light and vitality into this boutique apartment in a quiet pocket of North Annandale opposite Cohen Park. One of 10 in a well-kept block, the two-bedroom apartment is a short stroll to Whites Creek Valley Park and its playground, skate park and flourishing community garden. Footsteps to popular local cafes and just 500m to the light rail for an easy commute to the city, the well-presented apartment makes an ideal market entry or investme... for more information please visit our website

CAR	BATH	BED
1	1	2

SOLD

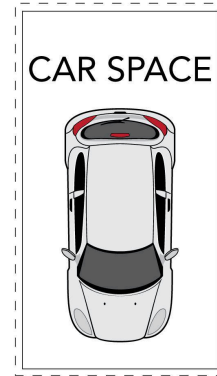
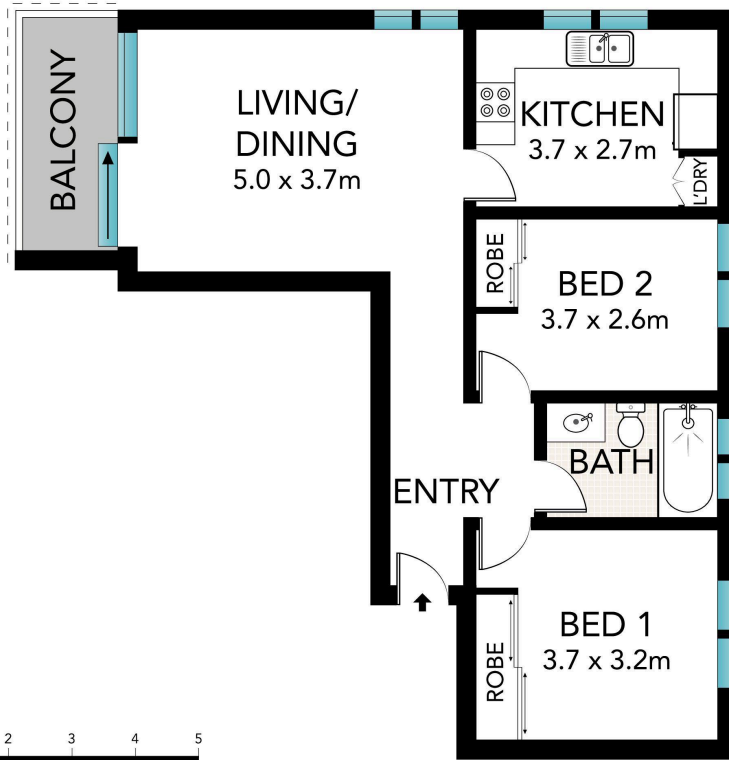
Sold \$750,000



Craig Davies 02 9719 8288

craigd@wwre.com.au

Disclaimer: In preparing this brochure, Warwick Williams and its related franchisees has relied in good faith upon information provided by others and has made all reasonable efforts to ensure that the information is correct. The accuracy of the information provided to you (whether written or verbal) cannot be guaranteed. If you are considering this property, you must make all enquiries necessary to satisfy yourself that all information is accurate.



4/1-5 Hutchinson Street, Annandale

Printed on 100% Recycled Paper

All information in this document has been gathered from various third party sources we believe to be reliable; however, we cannot guarantee its accuracy, and we accept no responsibility and disclaim all liability in respect to any errors, omissions, inaccuracies or misstatements in this document. Prospective purchasers are advised to carry out their own investigations and rely on their own enquiries.