

42/1 Harbourview Crescent

## A SUN-FILLED GARDEN APARTMENT IN ABBOTSFORD COVE

One of a handful of garden apartments in the award-winning Abbotsford Cove, this sun-drenched harbourside residence is perfectly configured for relaxed low-maintenance living and alfresco entertaining. Opening to an enormous landscaped courtyard bathed in all-day northerly sunshine, the two-bedroom apartment offers over 140sqm of indoor/outdoor living space and direct level lift access to double garaging. Enjoy an enviable bayside lifestyle with access to superb facilities including five pools, ... for more information please visit our website

Disclaimer: In preparing this brochure, Warwick Williams and its related franchisees has relied in good faith upon information provided by others and has made all reasonable efforts to ensure that the information is correct. The accuracy of the information provided to you (whether written or verbal) cannot be guaranteed. If you are considering this property, you must make all enquiries necessary to satisfy yourself that all information is accurate.

CAR	BATH	BED
2	2	2

**SOLD**

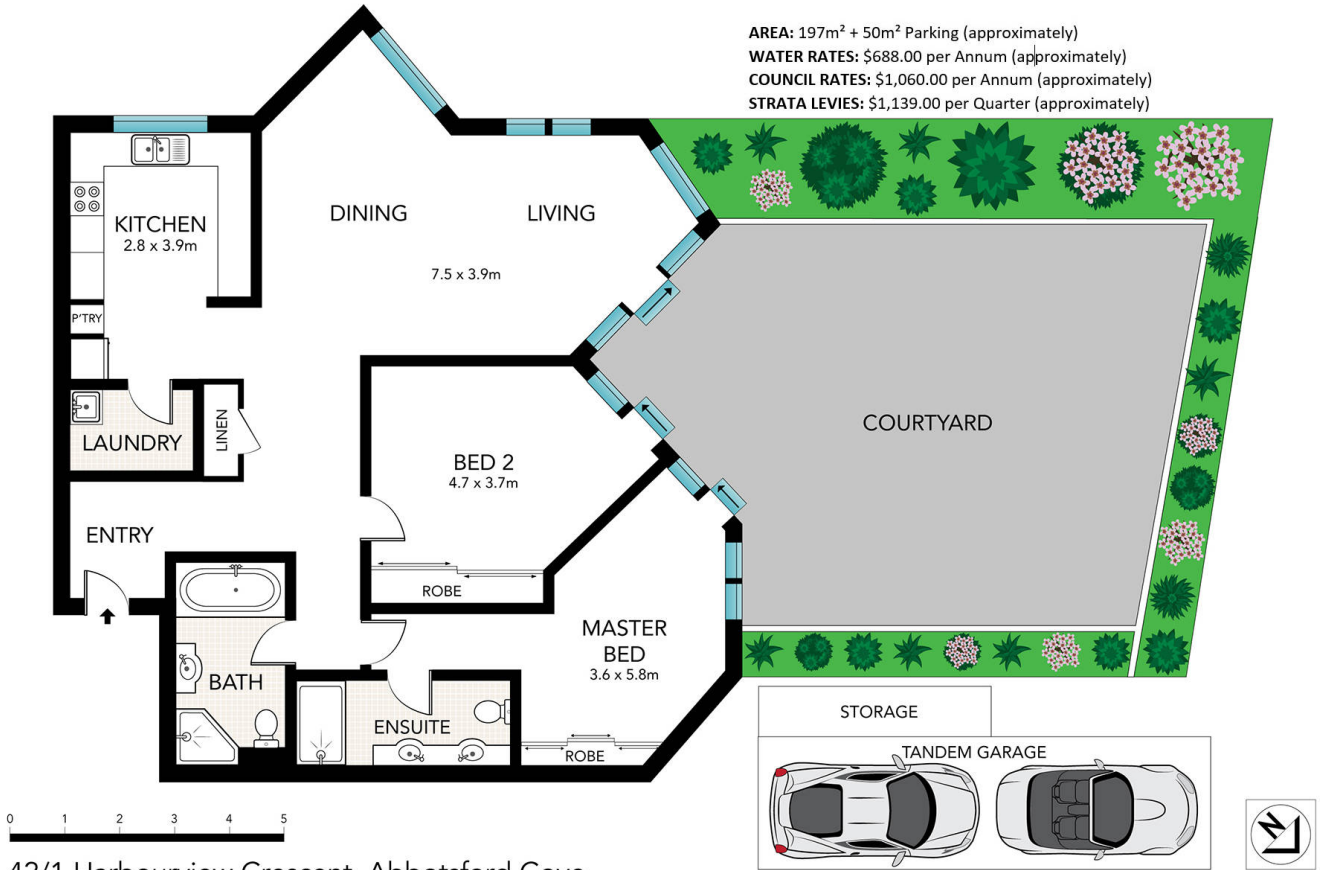
Sold \$1,100,000



Craig Davies 02 9719 8288

craigd@wwre.com.au

**AREA:** 197m<sup>2</sup> + 50m<sup>2</sup> Parking (approximately)  
**WATER RATES:** \$688.00 per Annum (approximately)  
**COUNCIL RATES:** \$1,060.00 per Annum (approximately)  
**STRATA LEVIES:** \$1,139.00 per Quarter (approximately)



42/1 Harbourview Crescent, Abbotsford Cove

Printed on 100% Recycled Paper

All information in this document has been gathered from various third party sources we believe to be reliable; however, we cannot guarantee its accuracy, and we accept no responsibility and disclaim all liability in respect to any errors, omissions, inaccuracies or misstatements in this document. Prospective purchasers are advised to carry out their own investigations and rely on their own enquiries.