



Actual View



10/15-17 Abbotsford Parade

AN ELEGANT PENINSULA SANCTUARY WITH PANORAMIC VIEWS

Panoramic views over Hen & Chicken Bay to Cabarita create an idyllic backdrop to this stylish waterfront reserve apartment and set the scene for a relaxed peninsula lifestyle. Occupying a private corner position and wrapped in windows on three sides, the impeccably appointed apartment enjoys an exclusive setting with an easy stroll to village cafes, boating clubs, the ferry and frequent city buses. Larger than most two bedroom apartments, the approx 80sqm apartment opens to a full-length enterta... for more information please visit our website

CAR	BATH	BED
1	1	1

SOLD

Sold



Adrian Sereni 02 9719 8288

adrians@wwre.com.au

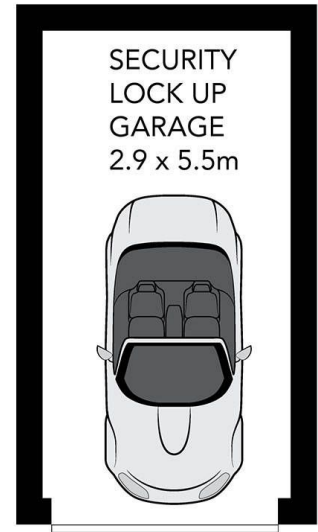
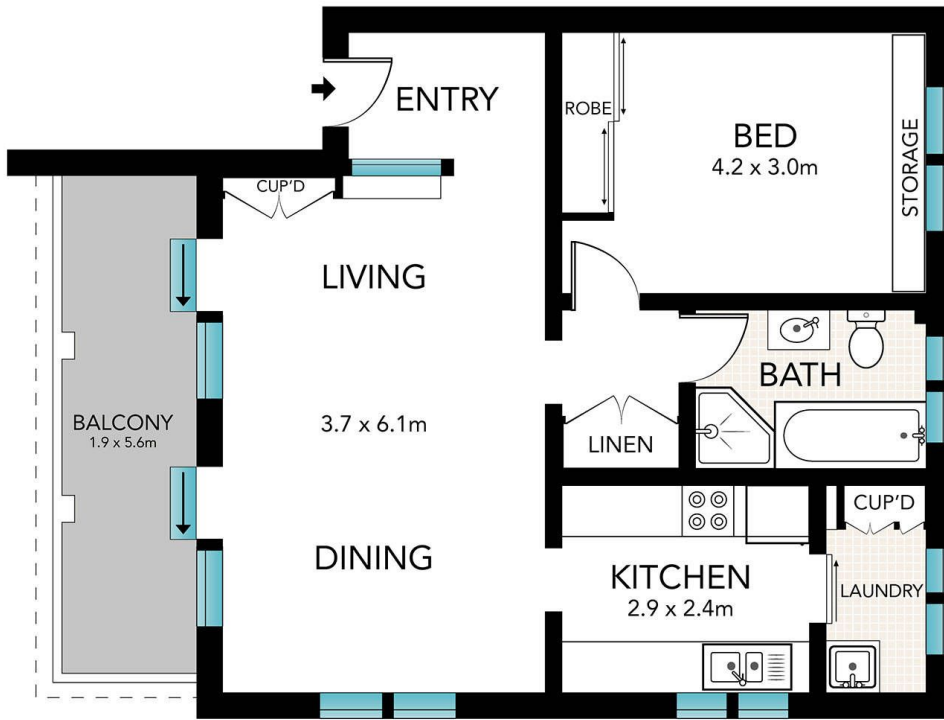
Warwick Williams 02 9719 8288

ww@wwre.com.au

Disclaimer: In preparing this brochure, Warwick Williams and its related franchisees has relied in good faith upon information provided by others and has made all reasonable efforts to ensure that the information is correct. The accuracy of the information provided to you (whether written or verbal) cannot be guaranteed. If you are considering this property, you must make all enquiries necessary to satisfy yourself that all



information is accurate.



AREA: 80m² living + 16m² parking (approximately)
WATER RATES: \$688.00 per Annum (approximately)
COUNCIL RATES: \$1,060.00 per Annum (approximately)
STRATA LEVIES: \$813.40 per Quarter (approximately)



10/15-17 Abbotsford Parade, Abbotsford

All information in this document has been gathered from various third party sources we believe to be reliable; however, we cannot guarantee its accuracy, and we accept no responsibility and disclaim all liability in respect to any errors, omissions, inaccuracies or misstatements in this document. Prospective purchasers are advised to carry out their own investigations and rely on their own enquiries.